

APPLICATIONS

- At Mining areas
- At oil in gas platform
- At ship building field
- Transportation, forest Area etc.
- At field like bridge construction, stage construction, etc.
- Wherever the space for lifting, lowering, uprooting and fastening is limited.



Moving products from one place to another



Laying conduits and pipelines



Uprooting trees



Installing underwater pump

360° Technical Features

- Hoisting operation at any angles
- Free of operation in danger Zone
- Grade 100 load chain-Wafios link
- Forged and Heat Treated load Hooks with batch trace ability and stretch indicators
- Double Pawl break system
- Asbestos free Brake Linings
- Forged Safety Latch
- 100% Load Tested to 1.5x WLL
- MBL of 400% of WLL
- 2000 Cycle Batch Test



Lifting with Confidence. Producing greater Output

Distributed by:

lift 360 CHAIN BLOCK

W.L.L 500–3000Kg
Operating instructions



INTRODUCTION

All users must read these operating instructions carefully prior to the initial operation. These instructions are intended to acquaint the user with the hoist and enable him to use it to the full extent of its intended capabilities. The operating instructions contain important information on how to handle the hoist in a safe, correct and economic way. Acting in accordance with these instructions helps to avoid dangers, reduce repair cost and down time and to increase the reliability and lifetime of the hoist. Apart from the operating instructions and the accident prevention act valid for the respective country and area where the hoist is used, also the commonly accepted regulations for safe and professional work must be adhered to.

CORRECT OPERATION

The capacity indicated on the hoist is the maximum safe working load (W.L.L.) which must not be exceeded.

Do not lift or transport loads while personnel are in the danger zone.

Do not allow personnel to pass under a suspended load.

After lifting or tensioning, a load must not be left unattended for a longer period of time.

Start moving the load only after it has been attached correctly and all personnel are clear of the danger zone.

The operator must ensure that the load is attached in a manner that does not expose himself or other personnel to danger by the hoist, chain(s) or the load

The hoists can be operated in ambient temperatures between -10°C and +50°C. Consult the manufacturer in case of extreme working conditions.

Note: At ambient temperatures below 0°C the brake should be checked for freezing.

The accident prevention act and/or safety

regulations of the respective country for using manual hoists must be strictly adhered to.

In order to ensure correct operation not only the operation instructions, but also the conditions for inspection and maintenance must be complied with. If defects are found, stop using the hoist immediately.

INCORRECT OPERATION

Do not exceed the rated capacity of the hoist.

Do not use the hoist for the transportation of people (Fig. 1).

Welding on hook and load chain is strictly forbidden. The load chain must never be used as ground connection during welding (Fig.2).

Avoid side pull, i. e. side load on either housing or bottom block (Fin.3).

The load chain must not be used for lashing purposes (sling chain) (Fig.4).

Do not knot or shorten the load chain by using bolts/ screws/ screwdrivers or other devices (Fig.5). Do not repair load chains installed in the hoist.

Do not remove the safety latch from the top or bottom hooks (Fig.6).

Never attach the load on the tip of the hook. This also applies to the top hook (Fig.7).

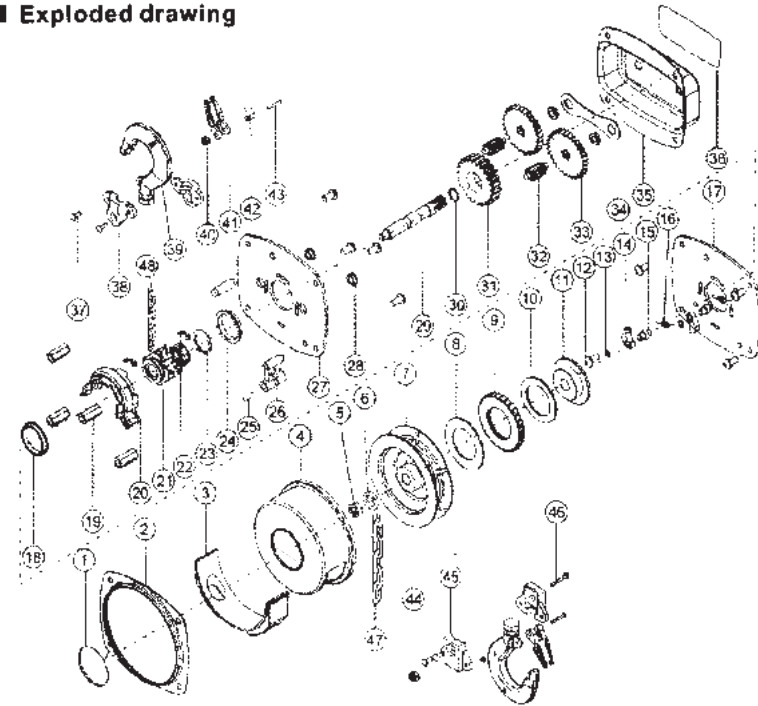
Do not use the chain stop as an operational limit device (#8 of Fig.10).

Do not throw the hoist down. Always place it properly on the ground.

INSPECTION PRIOR TO INITIAL OPERATION

Each hoist must be inspected prior to initial operation by a competent person. The inspection is visual and functional and shall establish that the hoist is safe and has not been damaged by incorrect transport or storage. Inspections should be made by a representative of the manufacturer or the supplier although the

Exploded drawing



Chain block spare parts list

No	Quantity	Description	No	Quantity	Description	No	Quantity	Description
1	1	Name plate	17	1	Left side plate assembly	33	21	Disc gear assy
2	1	Chain wheel cover	18	2	Steel bush	34	1	Strengthen plate
3	1	Chain wheel covers	19	4	Stay pin	35	1	Sheet cover
4	1	Gear cover	20	1	Stay pin	36	1	Name Plate
5	1	Nut	21	1	Load chain sprocket	37	4	Hook rivet
6	1	Washer	22	70	Roller	38	2	Top Hook hanger
7	1	hand wheel	23	1	Load chain sprocket	39	2	Hook
8	1	Friction Plates	24	1	Top hook shaft	40	2	Nut
9	1	Ratchet Disc	25	1	Sling plate pin	41	2	Safety Latch
10	1	Friction Platez	26	1	Sling plate	42	2	Spring
11	1	Brake seat	27	1	Right side plate assy	43	2	Screw
12	8	Pin nut	28	4	Bearing race	44	1	Nut
13	2	Spring washer	29	1	Driving shaft	45	2	Bottom hook hanger
14	2	Pawl	30	1	Spring washer	46	1	Bottom hook pin
15	2	Pawl pin	31	1	Spined gear	47	1	Hand chain
16	2	Pawl spring	32	2	Pinion shaft	48	1	Load chain

Describe

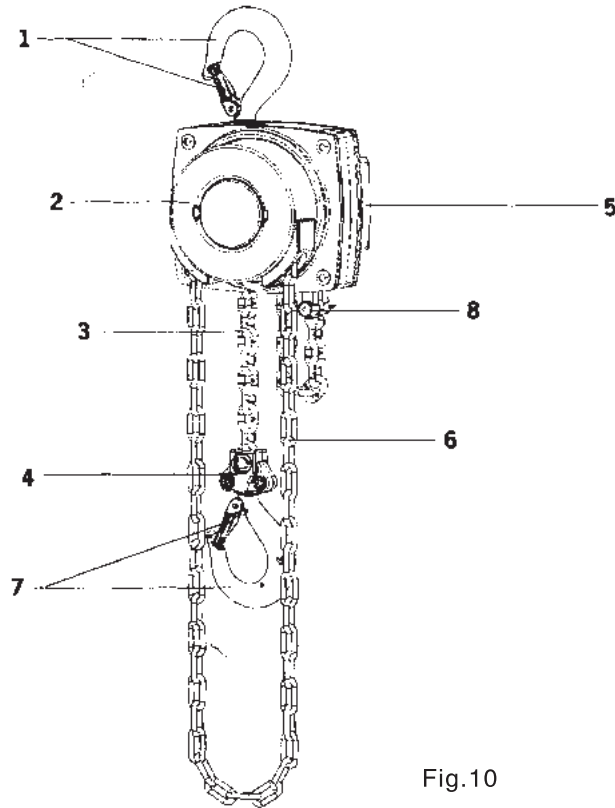


Fig.10

- | | |
|--------------------------------|---------------------|
| 1. Top hook with safety latch | 2. Hand wheel cover |
| 3. Load chain | 4. Bottom hook hub |
| 5. Gear cover | 6. Hand chain |
| 7. Load hook with safety latch | 8. Chain stop |

company can assign its own suitably trained personnel.

INSPECTION BEFORE STARTING WORK

Before starting work inspect the hoist, chain(s) and all load bearing constructions every time for visual defects. Furthermore test the brake and make sure that the load and hoist are correctly attached. For this purpose a short work cycle of lifting / pulling or tensioning and releasing should be carried out.

Load chain inspection

Inspect the load chain for sufficient lubrication and visually check for external defects, deformations, superficial cracks, wear or corrosion marks.

Chain stop inspection

The chain stop must be connected to the free (idle) chain strand (Fig.10).

Inspection of top and bottom hooks

Inspect top and bottom hooks for deformations, damage, cracks, wear or corrosion marks.

Chain reeving inspection

All units equipped with two or more chain falls should be inspected prior to being put into operation for twisted or kinked chains. The chains of multiple fall hoists may be twisted if the load chain has to be installed according to illustration (Fig.9). Hereby the welds on the standing links must face away from the load sheave.

FUNCTION / OPERATION

Lifting the load

Pulling the hand chain (Fig.10) in clockwise direction will raise the load.

The load must always be seated in the saddle of the hook. Never attach the load on the tip of the hook. (Fig.7). This also applies to the top hook.

Lowering the load

Pulling the hand chain (Fig.10) in anticlockwise direction will lower the load.

The overload protection is pre-set at factory to 1.2x rated capacity. When exceeding the pre-set overload limit, the protection device will be activated and the hand chain blocked. Lifting is thus prevented while lowering is furthermore possible.

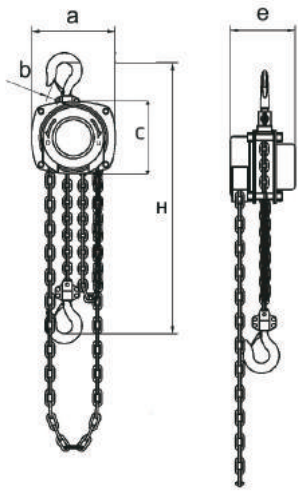
INSPECTION / MAINTENANCE

To ensure that the hoists remain in safe working order they are to be subjected to regular inspections by a competent person. Inspections are to be annual unless adverse working conditions dictate shorter periods. The components of the hoist are to be inspected for damage, wear, corrosion or other irregularities and all safety devices are to be checked for completeness and effectiveness. To test the brake, a test load of the hoist's rated capacity is required. To check for worn parts it may be necessary to disassemble the hoist. Repairs may only be carried out by a specialist workshop that uses original Yale spare parts.

Inspections are instigated by the user.

lift 360 CHAIN BLOCK

Hand pull gourd parameters



Capacity(kg)	Force of full load (N)	Lifting height (m)	No. of falls Load chain	Running test (kg)	Load chain Dia (mm)	Hand chain Dia (mm)
1000	305	≥6	1	1500	6	5
2000	360	≥6	1	3000	8	5

Capacity(kg)	Dimension (mm)					Package size/Wooden box (mm)			Load chain N.W. (kg/m)	Hand chain G.W. (kg/m)	G.W (kg)
	a	b	c	e	H	L	W	H			
1000	180	28	160	140	360	300	215	285	0.77	0.8	14.5
2000	210	34	190	160	460	320	235	280	1.36	0.9	20.5

lift 360 CHAIN BLOCK

Incorrect operation

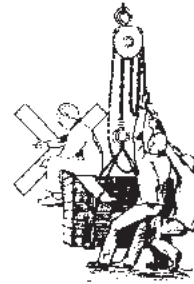


Fig.1

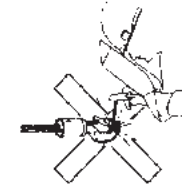


Fig.2

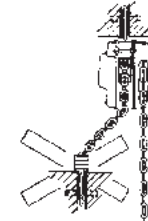


Fig.3



Fig.4



Fig.5

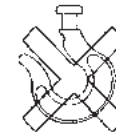


Fig.6



Fig.7



Fig.8

Sprocket

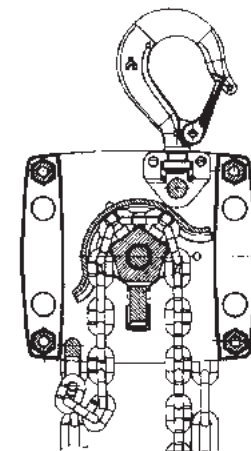


Fig.9