

# Ultra-MUSES

## STAGE ELECTRIC HOIST

Ultra-MUSES系列舞台电动葫芦

C1



型号/MODEL: Ultra-MUSES 500

起升速度/LIFTING SPEED: 0-19M/MIN

起升重量/SAFE WORKING LOAD: 500KG

产品符合C1安全等级要求，依据IGWW SQP2标准，并通过TÜV测试。

The product meets C1 requirements in accordance with IGWW SQP2, tested by TÜV.

# CONTENTS

目录

**产品简介 ..... 3****技术数据 ..... 4**

标准配置 ..... 4

选装配置 ..... 4

线形图 ..... 5

产品爆炸图 ..... 8

**电器数据 ..... 9****PRODUCT INTRODUCTION ... 3****TECHNICAL DATA ..... 4**

STANDARD VERSION ..... 4

OPTIONAL CONFIGURATION ..... 4

LINE GRAPH ..... 5

PRODUCTS EXPLOSION VIEW ..... 8

**ELECTRICAL DATA ..... 9**



产品图片仅供参考，以实物为准。

Images are for reference only. Please refer to the actual product.

### IP66 grade protection

Durable nylon shell with integrated die-cast aluminum housing. Corrosion-resistant, rust-free, and highly sealed for reliable outdoor use. Lightweight, easy to install, and excellent heat dissipation.

### Helical gear multi-drive transmission

Gears precision grade 6, low noise, safe operation, oil lubricated, maintenance free after sealing. Gear box has the function of temperature regulation for longer life.

### Clutch

Wet clutch friction pad. Overload protection, anti-collision. Maintenance free.

### Electromagnetic brake

Maintenance free electromagnetic brake for harsh environment. It will lock the brake immediately when power source is off.

### High performance electric motor

Small size, high starting torque, meet high frequency continuous work, insulation grade F, Optional motor overheating protection device.

### G100 grade DAT load chains

8620D alloy steel lifting chain, in line with European EN818-7 standard.

### 防护等级IP66

高强度尼龙外壳，铝合金箱体，压铸一体成型，耐腐蚀，不生锈，高密封性，可在雨中作业，安装方便，自重轻，散热好。

### 减速箱多层斜齿传动

齿轮精度等级6级，运行静音安全，齿轮箱采用完全油谷润滑，密封后可实现终身免维护，具有温度调节功能，寿命长。

### 离合器

湿式离合摩擦片，具有超载保护功能，以及防止冲顶，终身免维护设计。

### 电磁刹车

断电后第一时间放开，刹车抱死，安全可靠，制动器完全封闭免维护设计，满足恶劣环境工作要求。

### 高性能电机

体积小，启动转矩高，满足高频率持续工作，绝缘等级F级，可选配电机过热保护装置。

### G100级DAT链条

8620D合金钢起重链条，符合欧洲EN818-7标准。

## 标准配置

- 设备型号: Ultra-MUSES 500
- 起重量符合 BGV C1 (IGVV SQP2)标准: 500KG 双刹车
- 提升速度(m/min): 0-19
- 供电电压: 380-415V、3ph、+PE、50/60Hz;  
220-230V、3ph、+PE、50/60Hz。
- 控制电压: 控制系统配合输出
- 供电电缆: 可根据客户需求定制
- 控制电缆: 可根据客户需求定制
- 链条尺寸 EN818-7(mm): 7.1\*21
- 链条重量(KG/m): 1.8
- 链条等级: G100 (DAT)
- 链条表面: 磷化(黑色)
- 导链器: 带有4个链窝链轮的精密导链器
- 链条行数: 1
- 链条袋: 1纺织链条袋, 可拆卸, ≤30米。
- 离合器: 获得专利的摩擦离合器, 用于过载保护。
- 满载噪音(dB): ≤60
- 制动器: 2个直流制动
- 吊钩: 1个下(可旋转)
- 悬挂方式: 吊环悬挂
- 安装方式: 固定(正挂)
- 手柄: 标配
- 防护等级: IP66
- 不含链条的重量(KG): 52
- 电机功率(KW): 1.9
- 电流消耗(A): 5
- 机械等级: FEM 2m/ISO M5
- 电子限位: 直接调节位置外置电子触点限位
- 编码器: 增量式编码器, 适用于变频器模式。
- 颜色: 黑色, 色号RAL 9005 哑光。

## 选装配置

- **电子限位 选装** 内部调节机械旋转电子限位, 形成四点限位(见图6, P9)
- **编码器 选装** 预留编码器安装位 (低速链轮输出轴或高速电机轴)
- **悬挂方式 选装** 吊钩(见图2, P6)
- **称重检测 选装** 称重传感器
- **电磁刹车 选装** 电磁刹车开合反馈
- **电磁刹车 选装** 超静音刹车
- **连接插口 选装** 重载连接器

## STANDARD VERSION

- Model: Ultra-MUSES 500
- SWL acc. BGV C1 (IGVV SQP2): 500KG double brake
- Lifting speed (m/min): 0-19
- Supply voltage: 380-415V, 3ph, +PE, 50/60Hz;  
220-230V, 3ph, +PE, 50/60Hz.
- Control voltage: coordinated output with control system
- Service cable: can be customized according to customer needs
- Control cable: can be customized according to customer needs
- Chain acc. EN818-7 (mm): 7.1\*21
- Chain net weight (KG/m): 1.8
- Grade of chain: G100(DAT)
- Chain surface: phosphated (black)
- Chain guide: precise chain guide with 6-pocket chain wheel
- Chain falls : 1
- Chain bag: 1 textile chain bag, detachable, ≤30 meters.
- Clutch: patented friction clutch for overload protection
- Full load noise level (dB): ≤60
- Brake: 2 DC brakes
- Load hook: 1-fall / turnable
- Suspension: suspension ring
- Mounting position: stationary
- Handles : standard
- Protection level : IP66
- Weight without chain (KG): 52
- Motor power (KW): ca.1.9
- Current consumption (A) : ca.5
- Mechanism group: FEM 2m/ISO M5
- Electronic limit: directly adjusted external touch point limit
- Encoder: incremental encoder, for frequency converter.
- Color: black, RAL 9005 matt.

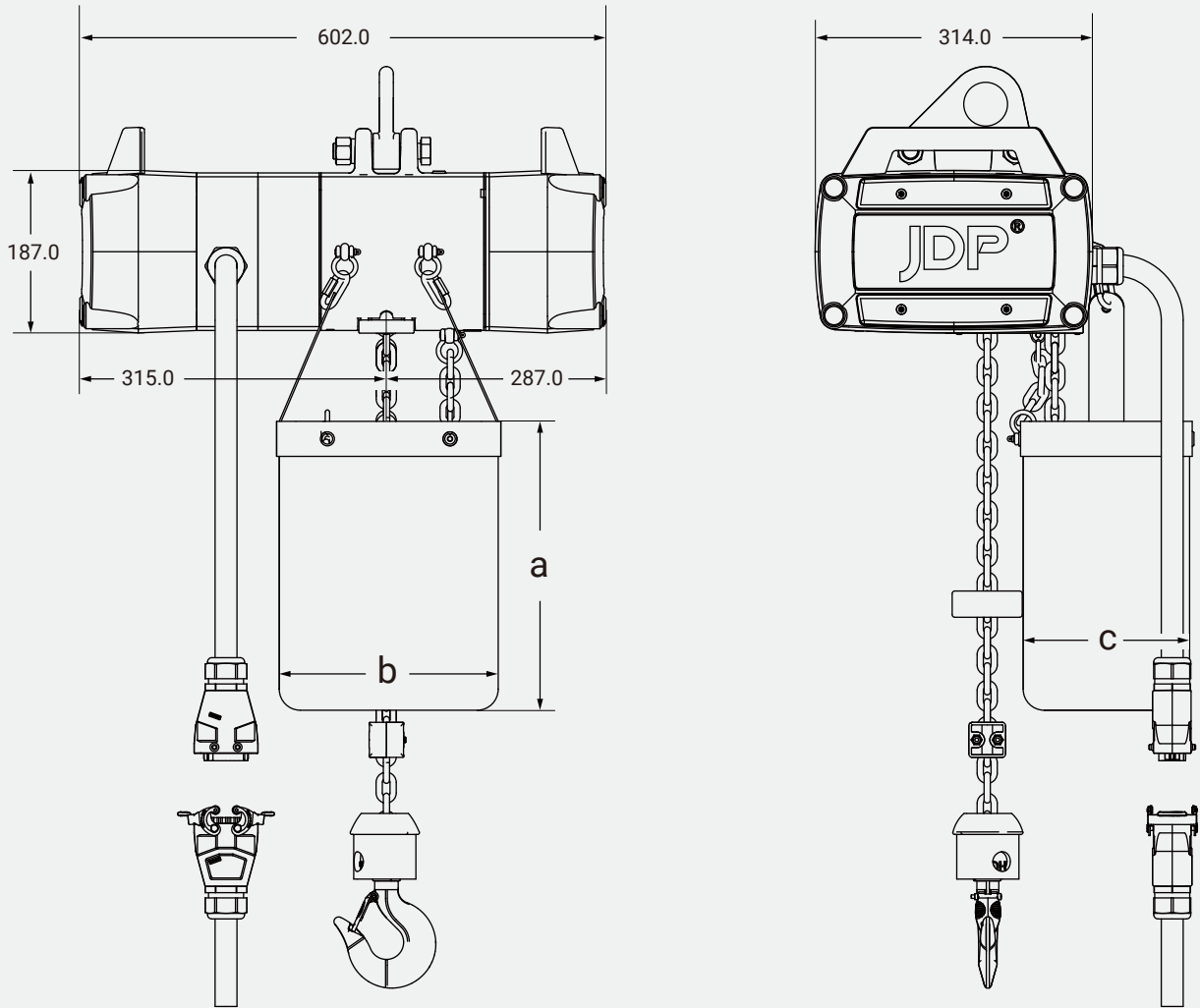
## OPTIONAL

- **Electronic Limit Optional** Internal adjustment of mechanical rotation electronic limit to form a four-point limit (See Figure 6, P9)
- **Encoder Optional** Reserved encoder mounting position (low speed sprocket output shaft or high speed motor shaft)
- **Suspension method Optional** Hook (See Figure 2, P6)
- **Weighing monitoring device Optional** Load cells
- **Electromagnetic brakes Optional** Electromagnetic brake opening and closing feedback
- **Electromagnetic brakes Optional** Ultra-quiet brakes
- **Connect the socket Optional** Overloaded connectors

# ELECTRIC CHAIN HOIST SIZE

## 电动葫芦尺寸表

图1/Figure 1



链条袋规格/CHAIN BAG SPECIFICATION			
链条长度 CHAIN LENGTH(m)	链条袋尺寸/CHAIN BAG SIZE(mm)		
	a	b	c
10	200	250	180
20	250	250	180
30	350	250	180

注：单位mm/Note:Unit mm

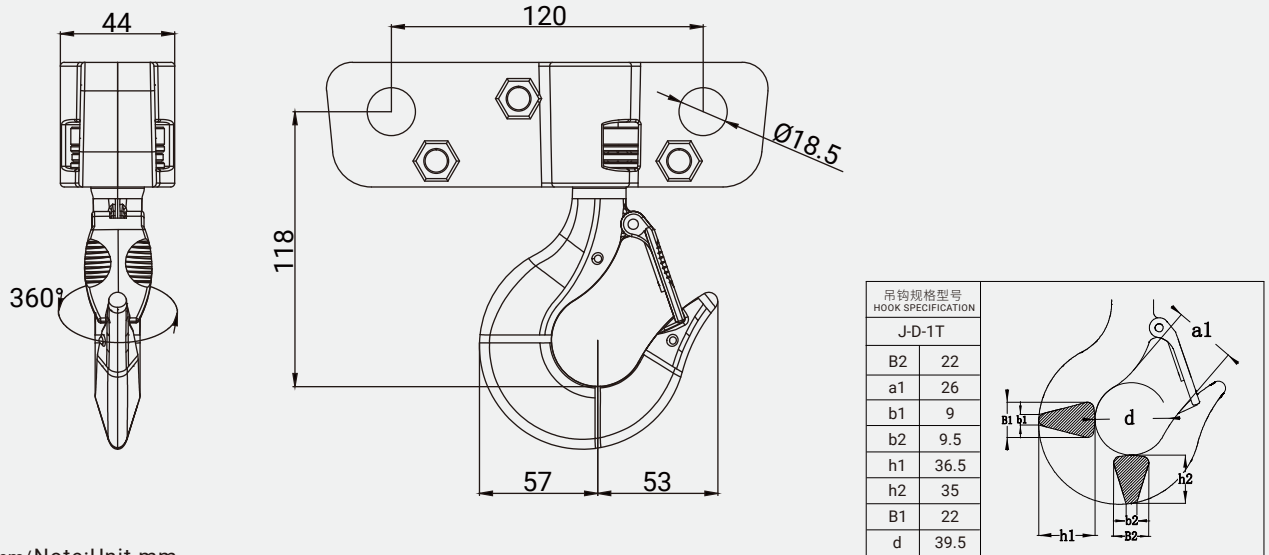
# OPTIONAL HOOK SUSPENSION ASSEMBLY

## 吊挂组件

配置1: 360°旋转吊钩悬挂组件

Standard 1: 360° rotating hook suspension assembly

图2/Figure 2

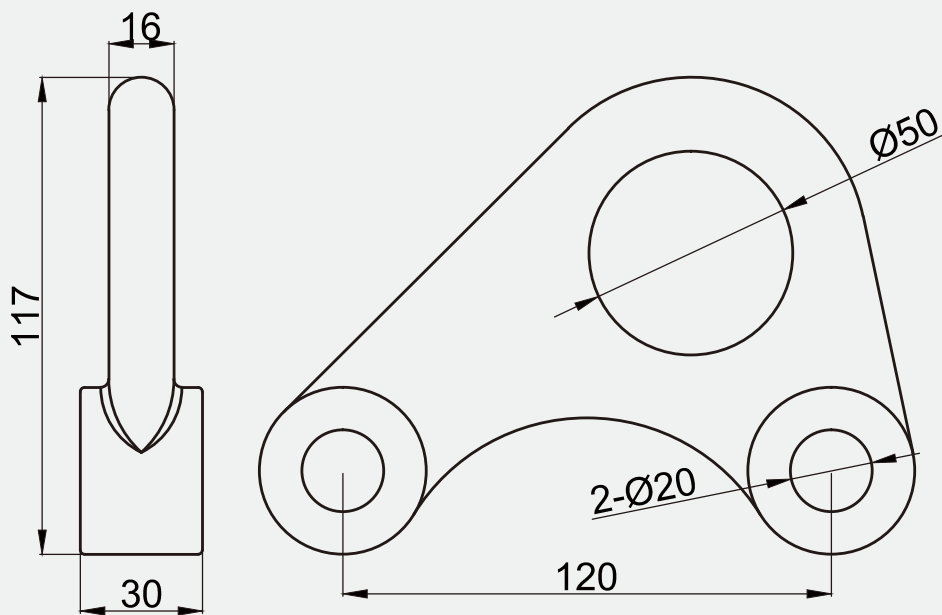


注: 单位mm/Note:Unit mm

配置2: 吊环组件

Standard 2: Lifting ring assembly

图3/Figure 3

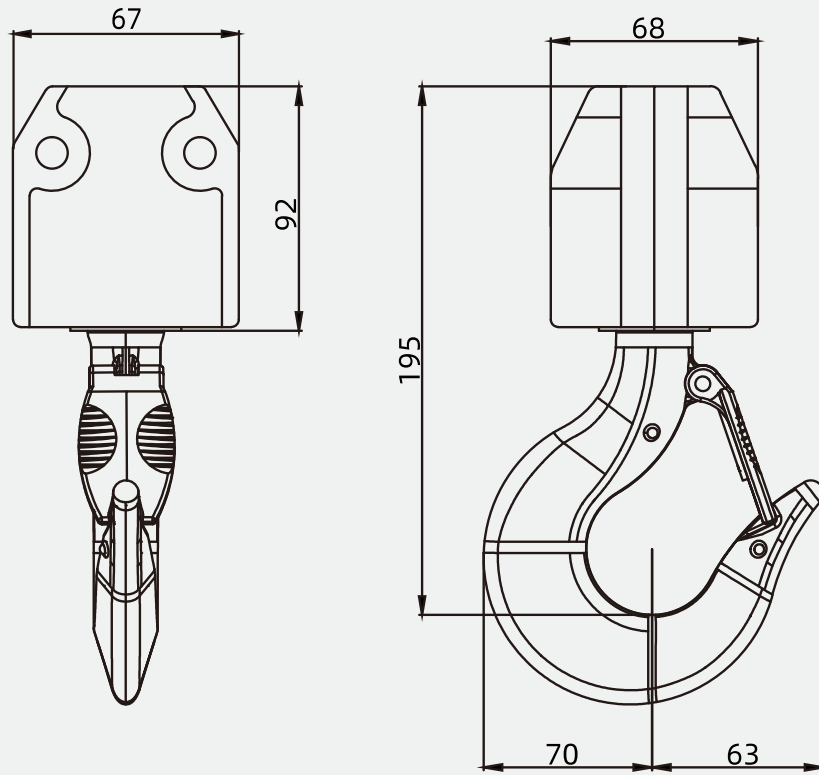


注: 单位mm/Note:Unit mm

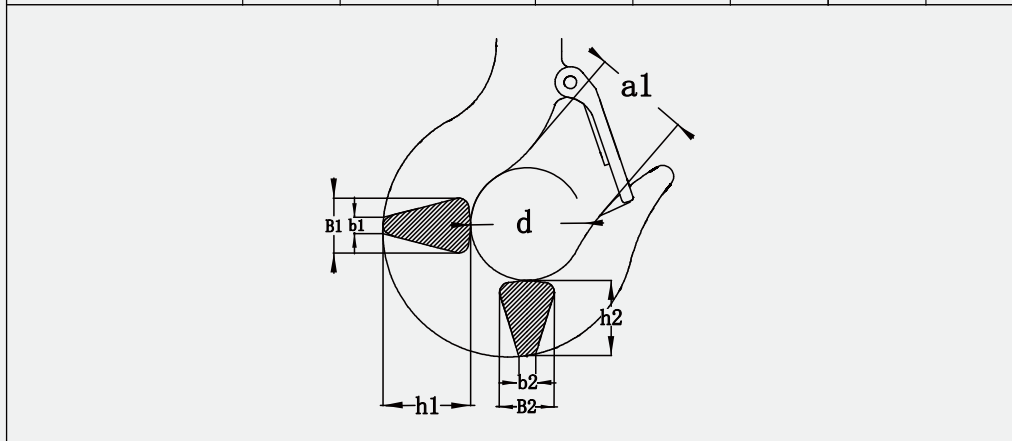
# HOOK ASSEMBLY

## 吊钩组件

图4/Figure 4



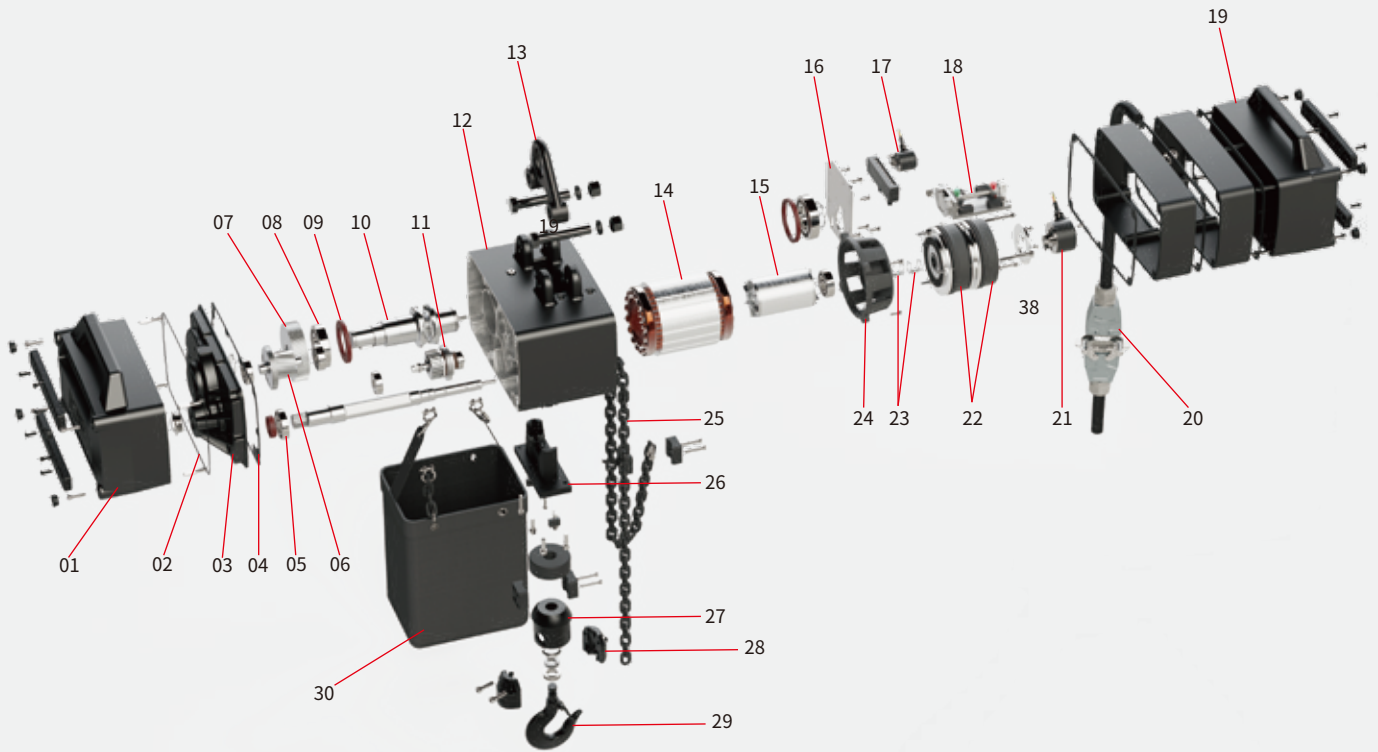
吊钩规格型号 HOOK SPECIFICATION	a1	b1	b2	d	h1	h2	B1	B2
J-D-1T	34	16	16.5	48	45.5	42	32	33



注：单位mm/Note:Unit mm

# PRODUCT STRUCTURE

## 产品结构表



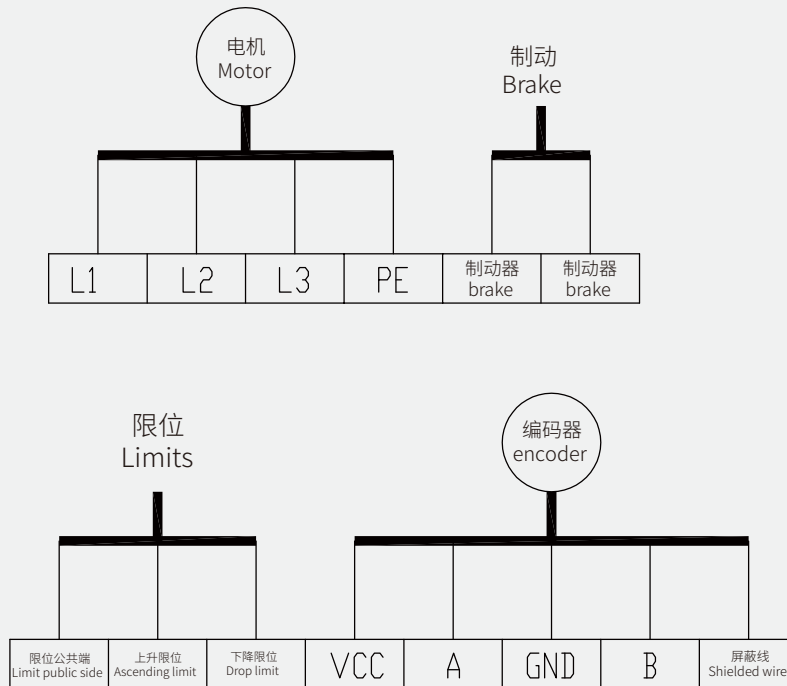
01: 齿轮箱端前盖	10: 起重链轮	20: 重载连接器	26: 尼龙导链架
02: 齿轮箱前盖密封橡胶垫	11: 离合器	21: 增量式编码器	27: 下钩胶套
03: 齿轮箱盖	12: 箱体	22: 电磁刹车	28: 下钩夹板
04: 齿轮箱端纸垫	13: 吊环	23: 键6*14	29: 吊钩
05: 轴承	14: 定子	24: 刹车网罩	30: 链兜
06: 慢速组合轮	15: 转子	25: 链条	
07: 慢速齿轮大齿	16: 电器		
08: 轴承	17: 绝对值编码器		
09: 油封	18: 四点限位总成		
	19: 电器端后盖		
01: gearbox front cover	10: sprocket	20: heavy loading socket	26: chain guide
02: gearbox front cover sealing rubber gasket	11: clutch	21: Incremental encoder	27: load hook rubber sleeve
03: gearbox end cover	12: gearbox	22: DC brake	28: load hook plate
04: gearbox paper gasket	13: suspension ring	23: key 6*14	29: hook
05: bearing	14: stator	24: brake cover mesh	30: chain bag
06: low-speed combination gear	15: rotor	25: chain	
07: low-speed driven gear	16: electrical components		
08: bearing	17: absolute encoder		
09: oil seal	18: four-point limit assembly		
	19: electrical end cover		

# ELECTRICAL WIRING DIAGRAM

## 电器线路图

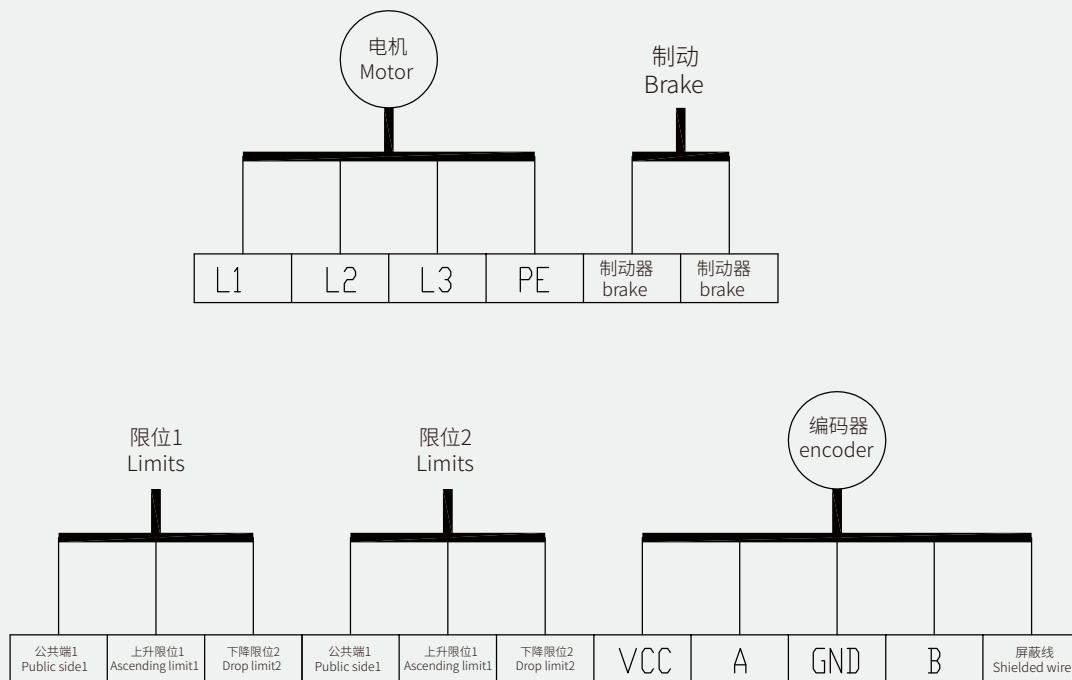
高压编码器双限位/High voltage encoder double limits

图5/Figure 5



高压编码器四限位/The high-voltage encoder has four limits

图6/Figure 6





[www.jdp.top](http://www.jdp.top)

+86 13315233723

Email:[admin@jdp.top](mailto:admin@jdp.top)

JDP China Drive Systems Co., Ltd