

Kyra

STAGE ELECTRIC HOIST

Kyra 系列舞台电动葫芦

D8
Plus

型号/MODEL: Kyra-D8 PLUS 1000

起升速度/LIFTING SPEED: 4M/MIN

起升重量/SAFE WORKING LOAD: 1000KG

产品符合 D8 PLUS 安全等级要求，依据 IGWW SQP2 标准，并通过 TÜV 测试。

The product meets D8 PLUS requirements in accordance with IGWW SQP2, tested by TÜV.



CONTENTS

目录

产品简介 2

技术数据 3

标准配置 3

选装配置 3

线形图 4

产品爆炸图 7

电器数据 9

PRODUCT INTRODUCTION ... 2

TECHNICAL DATA 3

STANDARD VERSION 3

OPTIONAL CONFIGURATION 3

LINE GRAPH 4

PRODUCTS EXPLOSION VIEW 8

ELECTRICAL DATA 9



产品图片仅供参考，以实物为准。

Images are for reference only. Please refer to the actual product.

- Rugged shell, small, fashion, easy to carry.
- Matte black surface, avoid light pollution, more convenient for use.
- Strong power, flexible and stable operation.
- Protection grade IP66, can work in the rain.
- G100(DAT) load chain, 8 times safety factor.
- Precision chain guide with 5 pocket sprockets for smoother operation.
- Helical gear transmission, gear grade 6, operating noise ≤ 60 dB.
- The lower hook ring design, more safe to use with the shackle.
- Nylon chain guide for smooth chain operation.
- ADC12 aluminum alloy shell, die-cast aluminum gearbox, strong & durable.
- With patented friction clutch for overload protection.
- Electromagnetic brake, higher safety.
- Specially designed chain bag, no disassembly, easily hung upside down.
- The sliding clutch is between the motor and the brake. Power from the brake to the load is transmitted by form-fitting gear parts. Even with serious clutch wear, the load won't fall uncontrollably as the brake can hold it in any position.
- Clutch is made of non-asbestos material.



无需拆卸即可正倒挂。

Easy forward and reverse hanging without disassembly.

- 机身坚固，外观小巧、时尚，搬运方便。
- 表面哑光黑处理，避免光污染，使用更方便。
- 动力强劲，运行灵活稳定。
- 整机防护等级IP66，可在雨中作业。
- 100级（DAT）链条，8倍安全系数。
- 配有5个链窝链轮的精密导链器，运行更顺滑。
- 斜齿齿轮传动，齿轮等级6级，运行噪音 ≤ 60 分贝。
- 下钩吊环设计，配合卸扣使用更安全。
- 尼龙导链器，确保链条运行顺畅。
- ADC12高强度铝合金外壳与压铸铝齿轮箱，坚固耐用。
- 搭配获得专利的摩擦离合器，用于过载保护。
- 电磁刹车制动，安全性更高。
- 链条袋经过特设计，无需拆卸，可轻松实现倒挂。
- 滑动离合器位于电动机和制动器之间，能很好地控制住传动部件，即使离合器磨损严重或损坏，负载也不会失去控制坠落，因为负载可以被制动器固定在任何位置。
- 离合器采用非石棉材质。

标准配置

- 设备型号: Kyra-D8 PLUS 1000
- 起重量符合 DGUV V54 (D8 PLUS): 1000KG 双刹车
- 提升速度(m/min): 4
- 供电电压: 380-415V、3ph、50/60Hz;
220-230V、3ph、50/60Hz (见图6, P9)
1m电缆, 带CEE-16 / 4
- 链条尺寸 EN818-7(mm): 7.4*21
- 链条重量 (KG/m): 1.2
- 链条等级: G100 (DAT)
- 链条安全系数: 8:1
- 链条表面: 磷化(黑)
- 导链器: 带有5个链窝链轮的精密导链器
- 链条行数: 1
- 链条袋: 1纺织链条袋, 可拆卸, ≤40米
- 离合器: 获得专利的摩擦离合器
用于过载保护。
- 满载噪音(dB): ≤60
- 制动器: 2个直流制动
- 吊钩: 1个下(可旋转)
- 悬挂方式: 吊环悬挂
- 安装方式: 自爬或固定
- 手柄: 标配
- 防护等级: IP66
- 不含链条重量及吊环、控制线裸机重量(KG): 27.9
- 电机功率(KW): 1.1
- 电流消耗(A): 5.6
- 机械等级: FEM 2m/ISO M5
- 颜色: 黑色, 色号RAL 9005 哑光

选装配置

- **电子限位 选装** 内部调节机械旋转电子限位
- **电子限位 选装** 直接调节上下电子触点限位(见图8,P10)
- **编码器 选装** 安装增量式编码器或预留编码器安装位(低速链轮输出轴或高速电机轴)
- **悬挂方式 选装** 旋转吊钩(见图3,P5)
- **称重检测 选装** 称重传感器
- **链条表面处理 选装** 镀锌(白)

STANDARD VERSION

- Model: Kyra-D8 PLUS 1000
- SWL acc. DGUV V54 (D8 PLUS): 1000KG double brake
- Lifting speed (m/min): ca. 4
- Supply voltage: 380-415V, 3ph, 50/60Hz;
220-230V, 3ph, 50/60Hz (See Figure 6, P9)
1m cable with CEE-16/4
- Chain acc. EN818-7 (mm): 7.4*21
- Chain net weight (KG/M): ca. 1.2
- Grade of chain: 100 (DAT)
- Chain safety factor: 8:1
- Chain surface: phosphating (black)
- Chain guide: precise chain guide with 5-pocket chain wheel
- Chain falls: 1
- Chain bag: 1 textile chain bag, detachable, ≤40 meters
- Clutch: patented friction clutch for overload protection
- Full load noise level (dB): ≤60
- Brake: 2 DC brakes
- Load hook: 1-fall / turnable
- Suspension: suspension ring
- Mounting position: climbing & stationary
- Handles: standard
- Protection level: IP66
- Net weight without chain, hook & suspension, direct control (KG): 27.9
- Motor power (KW): ca. 1.1
- Current consumption (A): ca. 5.6
- Mechanism group: FEM 2m/ISO M5
- Color: black, RAL 9005 matt

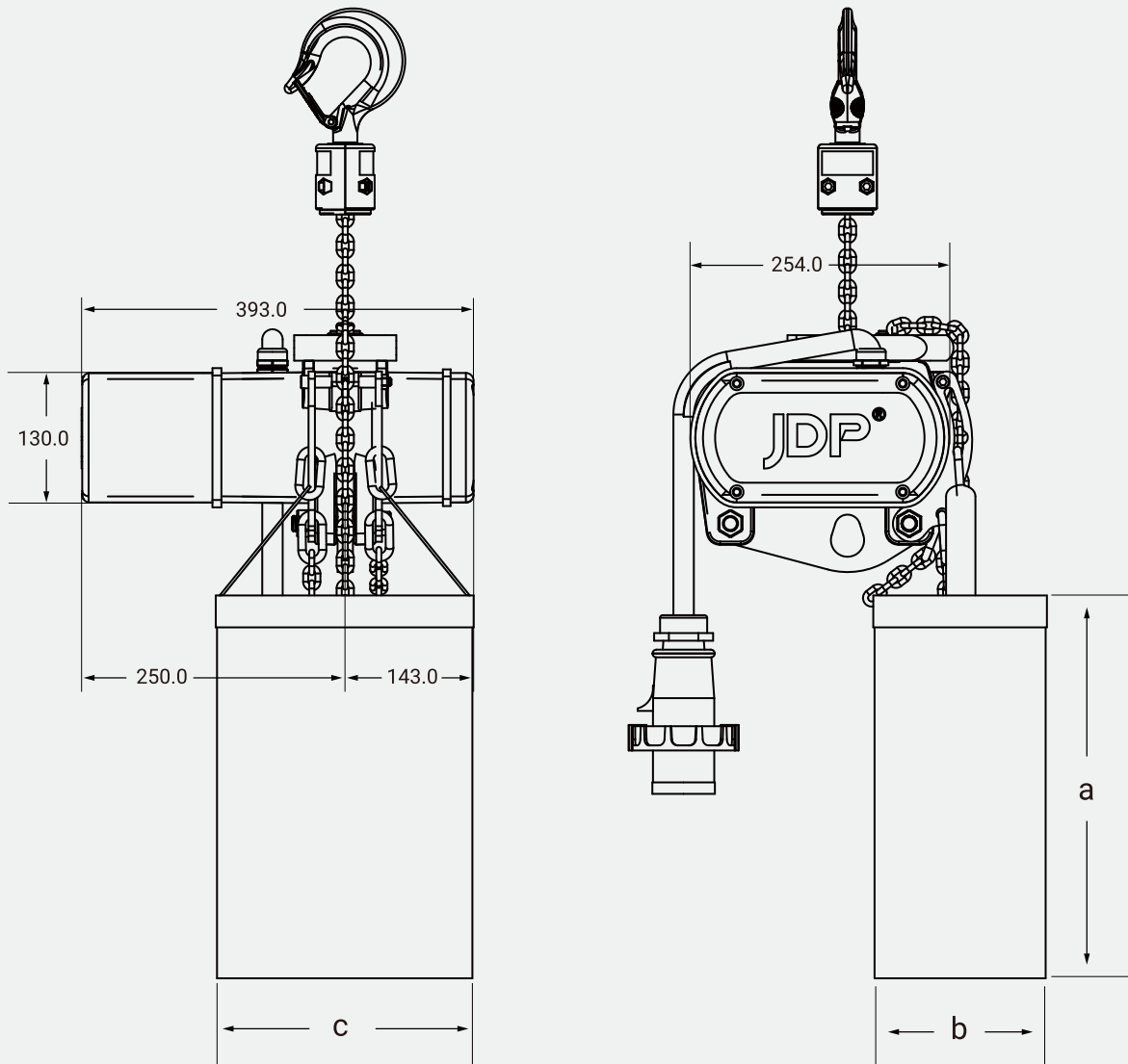
OPTIONAL

- **Electronic limit switch, optional**, internal adjust mechanical rotation electronic limit
- **Electronic limit switch, optional**, directly adjust the up and down electronic contact limit switch(See Figure 8, P10)
- **Encoder, optional**, install incremental encoder or reserved encoder installation position (low-speed sprocket output shaft or high-speed motor shaft)
- **Suspension method, optional**, swivel hook(See Figure3, P5)
- **Weighing detection, optional**, load cell
- **Chain surface, optional**, galvanized (white)

ELECTRIC CHAIN HOIST SIZE

电动葫芦尺寸表

图1/Figure 1



链条袋规格/CHAIN BAG SPECIFICATION			
链条长度 CHAIN LENGTH(m)	链条袋尺寸/CHAIN BAG SIZE(mm)		
	a	b	c
10	150	120	150
15	150	120	150
20	200	120	200
25	200	120	200
30	200	120	200

注：单位mm/Note:Unit mm

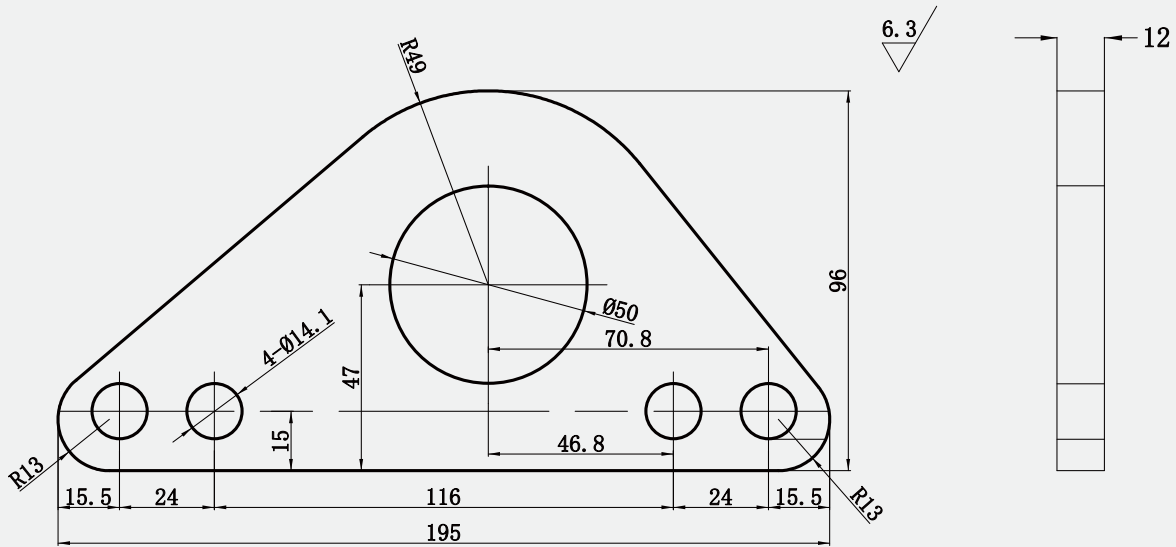
OPTIONAL HOOK SUSPENSION ASSEMBLY

吊挂组件

配置1: 单孔悬挂板组件

Standard 1: Single hole suspension plate assembly

图2/Figure 2

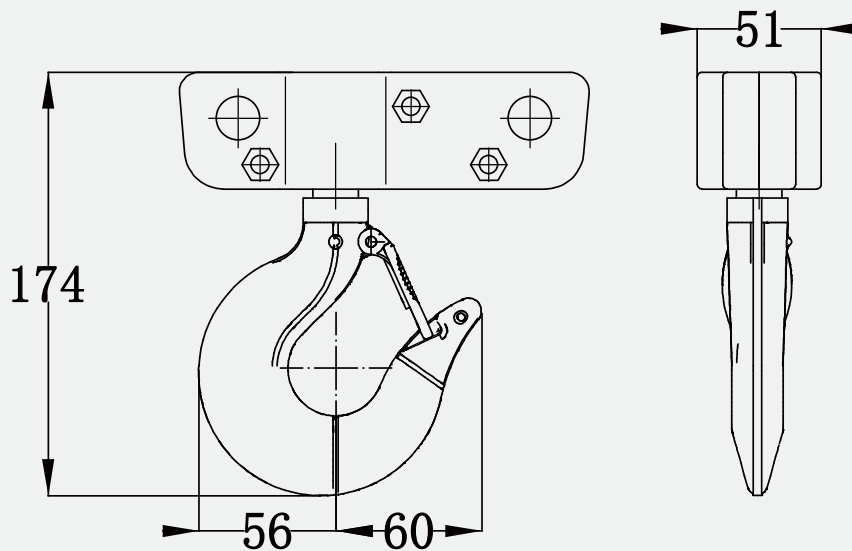


注: 单位mm/Note:Unit mm

配置2: 360°旋转吊钩悬挂组件

Standard 2: 360° rotating hook suspension assembly

图3/Figure 3



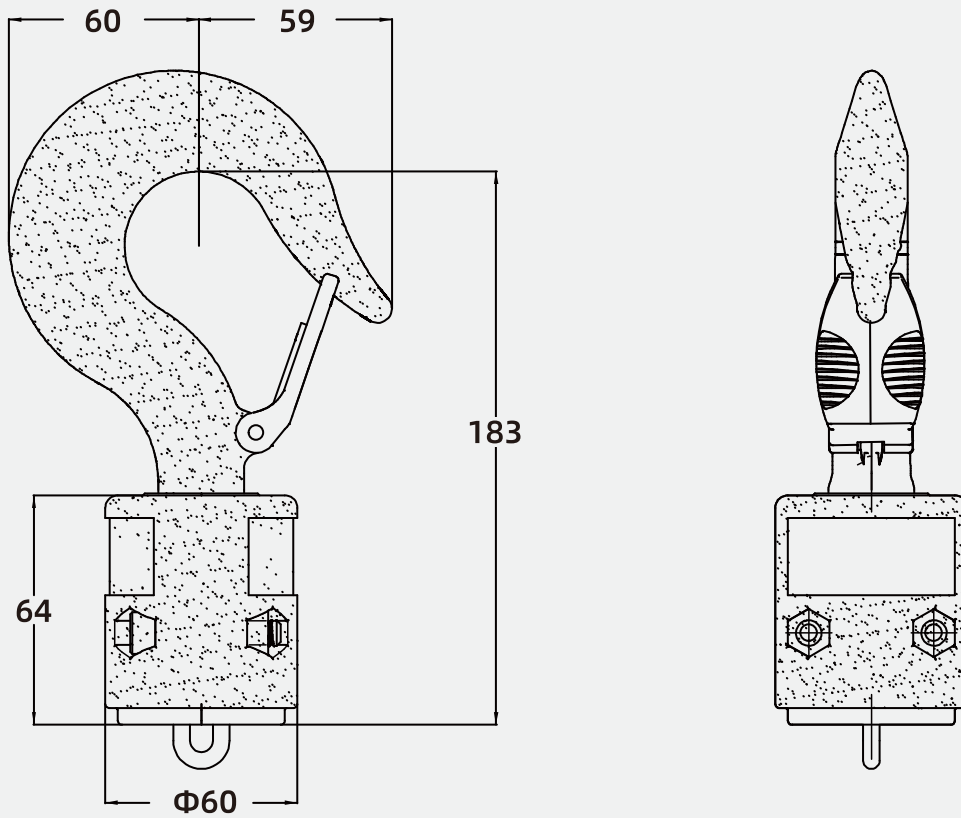
吊钩规格型号 HOOK SPECIFICATION	
J-D-1T	
B2	21
a1	33
b1	7
b2	7
h1	37
h2	35
B1	21
d	40

注: 单位mm/Note:Unit mm

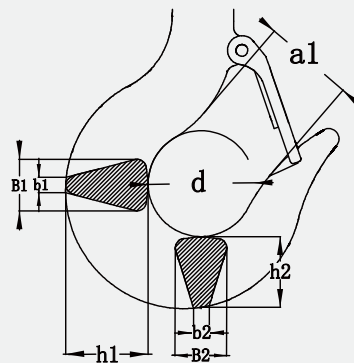
HOOK ASSEMBLY

吊钩组件

图4/Figure 4



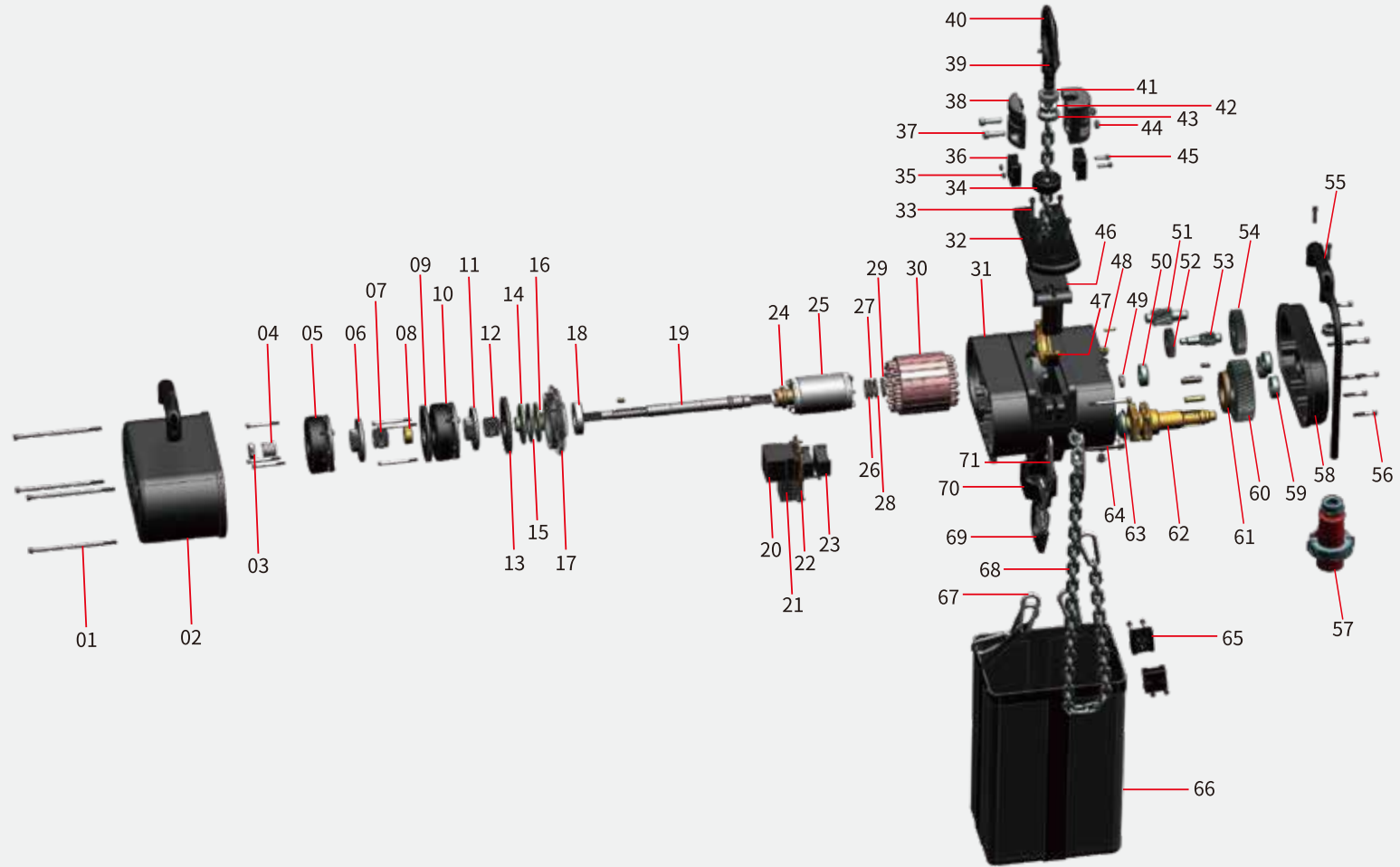
吊钩规格型号 HOOK SPECIFICATION	b1	B1	b2	B2	h1	h2	d	a1
J-D-1T	7	22.3	7	37	34	21.7	40	34



注：单位mm/Note:Unit mm

PRODUCT STRUCTURE

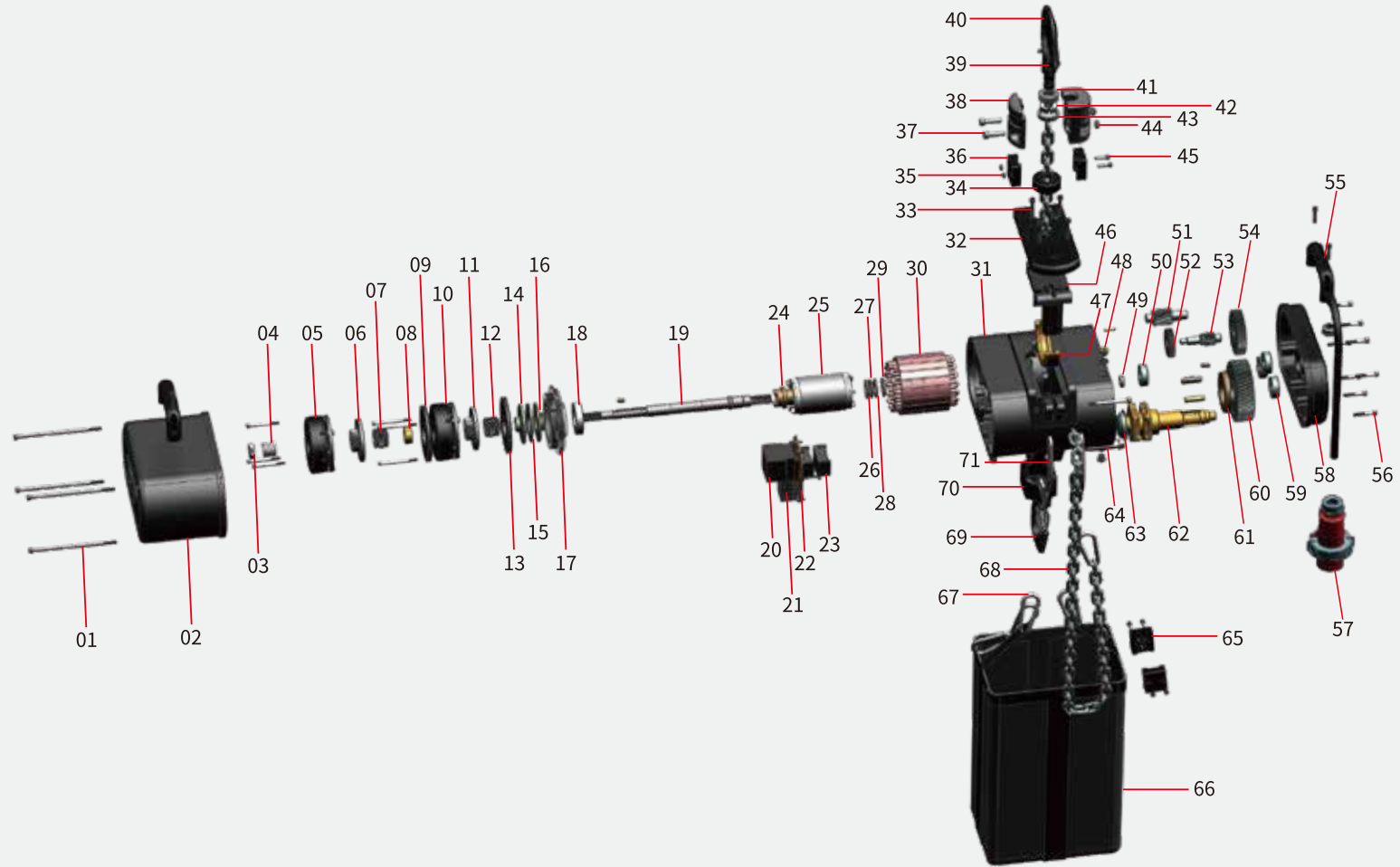
产品结构表



- | | | | |
|-------------|-------------|--------------|-----------|
| 01: 电器端盖螺丝 | 19: 转子轴 | 39: 保险卡 | 57: 航空插头 |
| 02: 双刹电器盖 | 20: 高压接触器 | 40: 下钩 | 58: 齿轮箱端盖 |
| 03: 离合器调节螺母 | 21: 接线端子 | 41: 单向推力球轴承 | 59: 轴承 |
| 04: 调节弹簧 | 22: 卡轨 | 42: 下钩两半圆固定圈 | 60: 输出齿轮 |
| 05: 电磁制动器 | 23: 整流器 | 43: 固定圈 | 61: 油封 |
| 06: 制动摩擦片 | 24: 转子轴套 | 44: 下钩螺母 | 62: 链轮 |
| 07: 制动器花键套 | 25: 转子 | 45: 螺丝 | 63: 链轮堵 |
| 08: 调节套 | 26-28: 压力轴承 | 46: 导链架 | 64: 上钩轴 |
| 09: 刹车转接板 | 29: 轴承垫片 | 47: 护链器 | 65: 链条锁块 |
| 10: 电磁制动器 | 30: 定子 | 48: 油堵 | 66: 储链袋 |
| 11: 制动摩擦片 | 31: 齿轮箱体 | 49: 轴承 | 67: 环形链接环 |
| 12: 制动器花键套 | 32: 出链盖板 | 50: 轴承 | 68: 链条 |
| 13: 刹车底板 | 33: 导链架固定螺丝 | 51: 一级传动齿轮轴 | 69: 上钩 |
| 14: 离合器上压片 | 34: 橡胶顶块 | 52: 一级传动齿轮 | 70: 上钩夹板 |
| 15: 摩擦片 | 35: 螺母 | 53: 二级传动齿轮轴 | 71: 链兜挂件 |
| 16: 离合器下压片 | 36: 链条锁块 | 54: 二级传动齿轮 | |
| 17: 制动器底座 | 37: 下钩螺丝 | 55: 手柄 | |
| 18: 轴承 | 38: 下钩夹板 | 56: 齿轮箱端盖螺丝 | |

PRODUCT STRUCTURE

产品结构表



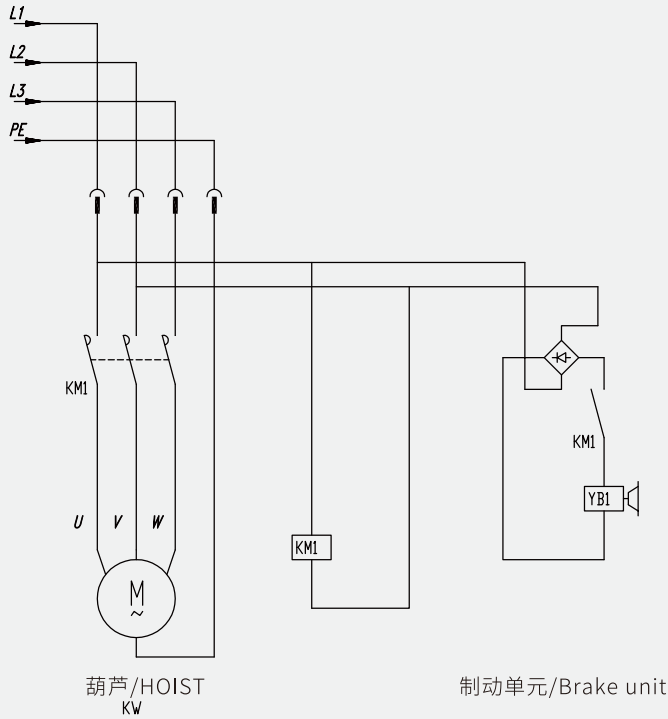
- | | | | |
|---------------------------------|------------------------------|--|---------------------------|
| 01: electrical end cover screw | 19: rotor shaft | 39: safety latch | 57: aviation plug |
| 02: dual brake electrical cover | 20: high voltage contactor | 40: load hook | 58: gearbox end cover |
| 03: clutch adjustment nut | 21: terminals | 41: one-way thrust bearing | 59: bearing |
| 04: adjustment spring | 22: DIN rail | 42: two semi-circle fixing rings for the load hook | 60: output gear |
| 05: DC brake | 23: rectifier | 43: retaining ring | 61: oil seal |
| 06: brake friction disc | 24: rotor shaft sleeve | 44: load hook nut | 62: sprocket |
| 07: brake spline sleeve | 25: rotor | 45: screw | 63: sprocket plug |
| 08: adjustment sleeve | 26-28: thrust bearing | 46: chain guide | 64: upper hook shaft |
| 09: brake adapter plate | 29: bearing shim | 47: chain guard | 65: chain locking block |
| 10: DC brake | 30: stator | 48: oil plug | 66: chain bag |
| 11: brake friction disc | 31: gearbox | 49: bearing | 67: link ring |
| 12: brake spline sleeve | 32: chain out cover | 50: bearing | 68: chain |
| 13: brake base plate | 33: chain guide fixing screw | 51: 1st stage gear shaft | 69: upper hook |
| 14: upper pressure plate | 34: rubber bumper | 52: 1st stage gear | 70: upper hook side plate |
| 15: friction disc | 35: nut | 53: 2nd stage gear shaft | 71: chain bag hanger |
| 16: lower pressure plate | 36: chain locking block | 54: 2nd stage gear | |
| 17: brake base | 37: load hook screw | 55: handle | |
| 18: bearing | 38: load hook plate | 56: gearbox end cover screw | |

ELECTRICAL WIRING DIAGRAM

电器线路图

直接控制-单刹 -3ph/High voltage directly control-single brake-3ph

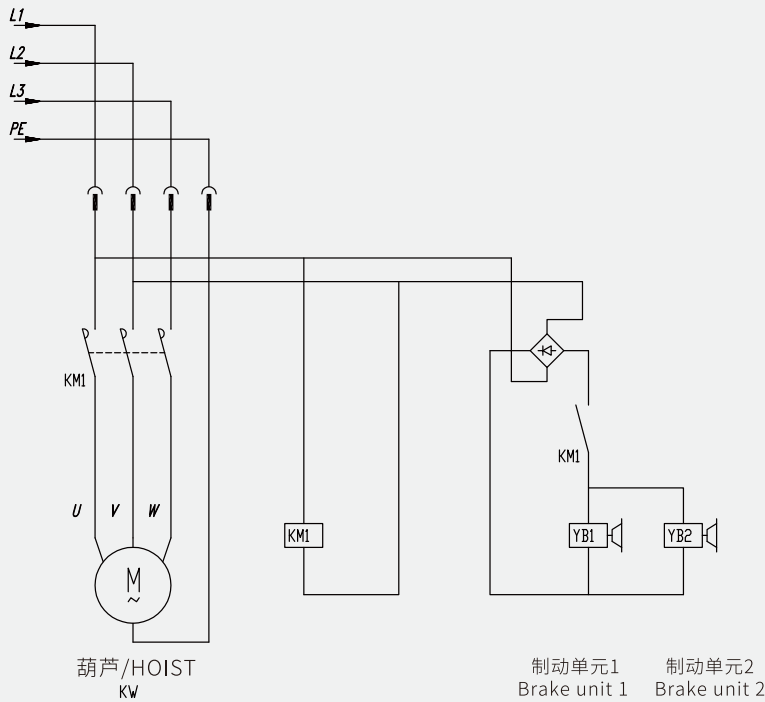
图5/Figure 5



注：不带限位/Note: without limit switch

直接控制-双刹 -3ph/High voltage directly control-double brake-3ph

图6/Figure 6



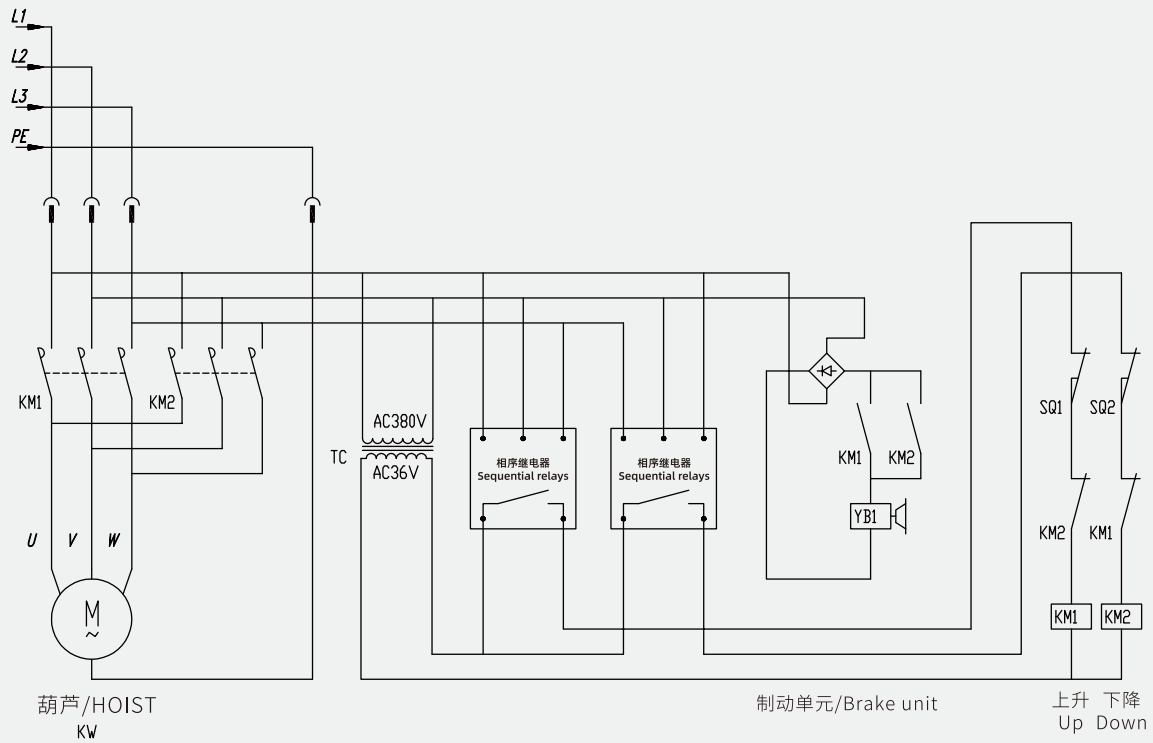
注：不带限位/Note: without limit switch

ELECTRICAL WIRING DIAGRAM

电器线路图

直接控制-单刹 -3ph/High voltage directly control-single brake-3ph

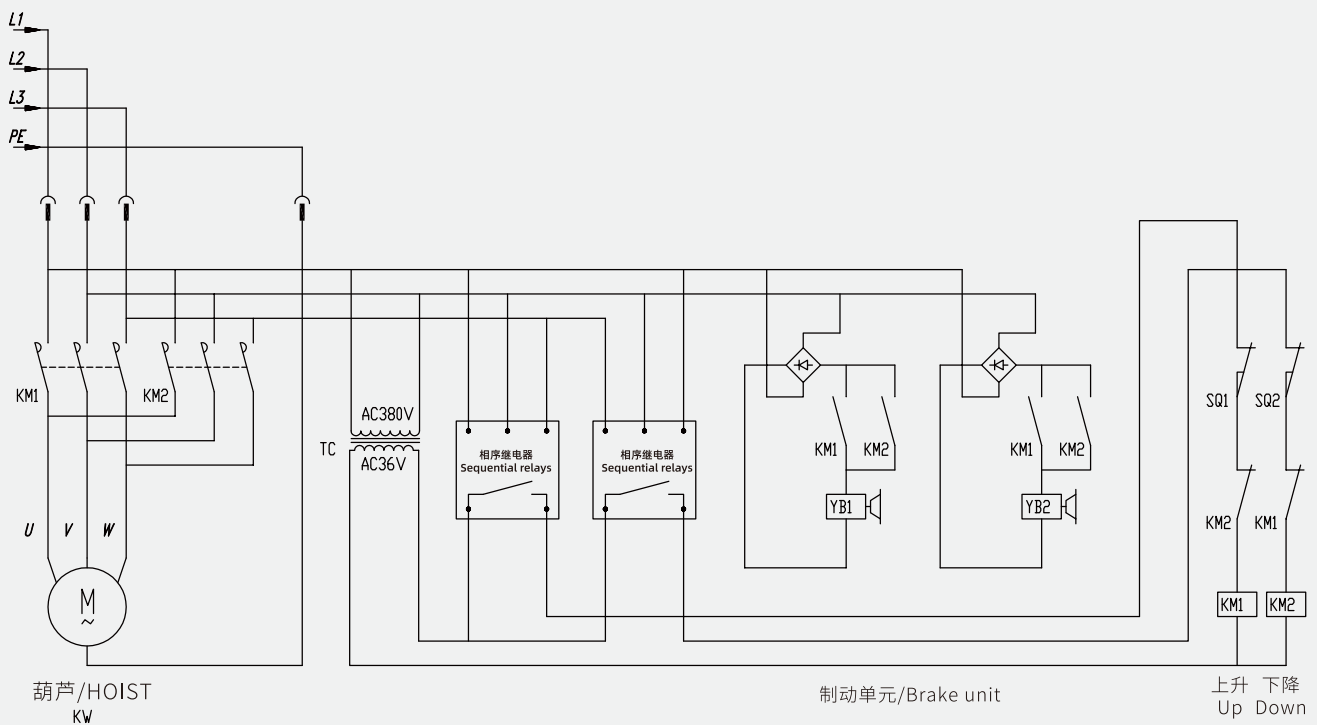
图7/Figure 7



注：带限位/Note: with limit switch

直接控制-双刹 -3ph/High voltage directly control-double brake-3ph

图8/Figure 8



注：带限位/Note: with limit switch

www.jdp.top

Tel: +86 13315233723 (Wechat number)

WhatsApp: +86 17332256769

admin@jdp.top

Manufacturer: JDP China Drive Systems Co., Ltd