

Kyra

STAGE ELECTRIC HOIST

Kyra 系列舞台电动葫芦

D8
Plus

型号/MODEL: Kyra-D8 PLUS 2000

起升速度/LIFTING SPEED: 4M/MIN

起升重量/SAFE WORKING LOAD: 2000KG

产品符合 D8 PLUS 安全等级要求，依据 IGWW SQP2 标准，并通过 TÜV 测试。

The product meets D8 PLUS requirements in accordance with IGWW SQP2, tested by TÜV.



CONTENTS

目录

产品简介 2

技术数据 3

标准配置 3

选装配置 3

线形图 4

产品爆炸图 7

电器数据 9

PRODUCT INTRODUCTION ... 2

TECHNICAL DATA 3

STANDARD VERSION 3

OPTIONAL CONFIGURATION 3

LINE GRAPH 4

PRODUCTS EXPLOSION VIEW 8

ELECTRICAL DATA 9



产品图片仅供参考，以实物为准。

Images are for reference only. Please refer to the actual product.

- Rugged shell, small, fashion, easy to carry.
- Matte black surface, avoid light pollution, more convenient for use.
- Strong power, flexible and stable operation.
- Protection grade IP66, can work in the rain.
- G100(DAT) load chain, 8 times safety factor.
- Precision chain guide with 5 pocket sprockets for smoother operation.
- Helical gear transmission, gear grade 6, operating noise ≤ 60 dB.
- The lower hook ring design, more safe to use with the shackle.
- Nylon chain guide for smooth chain operation.
- ADC12 aluminum alloy shell, die-cast aluminum gearbox, strong & durable.
- With patented friction clutch for overload protection.
- Electromagnetic brake, higher safety.
- Specially designed chain bag, no disassembly, easily hung upside down.
- The sliding clutch is between the motor and the brake. Power from the brake to the load is transmitted by form-fitting gear parts. Even with serious clutch wear, the load won't fall uncontrollably as the brake can hold it in any position.
- Clutch is made of non-asbestos material.



无需拆卸即可正倒挂。

Easy forward and reverse hanging without disassembly.

- 机身坚固，外观小巧、时尚，搬运方便。
- 表面哑光黑处理，避免光污染，使用更方便。
- 动力强劲，运行灵活稳定。
- 整机防护等级IP66，可在雨中作业。
- 100级（DAT）链条，8倍安全系数。
- 配有5个链窝链轮的精密导链器，运行更顺滑。
- 斜齿齿轮传动，齿轮等级6级，运行噪音 ≤ 60 分贝。
- 下钩吊环设计，配合卸扣使用更安全。
- 尼龙导链器，确保链条运行顺畅。
- ADC12高强度铝合金外壳与压铸铝齿轮箱，坚固耐用。
- 搭配获得专利的摩擦离合器，用于过载保护。
- 电磁刹车制动，安全性更高。
- 链条袋经过特设计，无需拆卸，可轻松实现倒挂。
- 滑动离合器位于电动机和制动器之间，能很好地控制住传动部件，即使离合器磨损严重或损坏，负载也不会失去控制坠落，因为负载可以被制动器固定在任何位置。
- 离合器采用非石棉材质。

标准配置

- 设备型号: Kyra-D8 PLUS 2000
- 起重量符合 DGUV V54 (D8 PLUS): 2000KG 双刹车
- 提升速度(m/min): 4
- 供电电压: 380-415V、3ph、50/60Hz;
220-230V、3ph、50/60Hz (见图6, P9)
1m电缆, 带CEE-16 / 4
- 链条尺寸 EN818-7(mm): 10.2×30
- 链条重量 (KG/m): 2.32
- 链条等级: G100 (DAT)
- 链条安全系数: 8:1
- 链条表面: 磷化(黑)
- 导链器: 带有4个链窝链轮的精密导链器
- 链条行数: 1
- 链条袋: 1纺织链条袋, 可拆卸, ≤35米
- 离合器: 获得专利的摩擦离合器
用于过载保护。
- 满载噪音(dB): ≤60
- 制动器: 2个直流制动
- 吊钩: 1个下(可旋转)
- 悬挂方式: 吊环悬挂
- 安装方式: 自爬或固定
- 手柄: 标配
- 防护等级: IP66
- 不含链条重量及吊环、控制线裸机重量(KG): 50
- 电机功率(KW): 2.2
- 电流消耗(A): 5.6
- 机械等级: FEM 2m/ISO M5
- 颜色: 黑色, 色号RAL 9005 哑光

选装配置

- 电子限位 选装 4点内置凸轮限位
- 电子限位 选装 2点外置限位
- 编码器 选装 安装增量式编码器或预留编码器安装位(低速链轮输出轴或高速电机轴)
- 称重检测 选装 称重传感器
- 链条表面处理 选装 镀锌(白)

STANDARD VERSION

- Model: Kyra-D8 PLUS 2000
- SWL acc. DGUV V54 (D8 PLUS): 2000KG double brake
- Lifting speed (m/min): ca. 4
- Supply voltage: 380-415V, 3ph, 50/60Hz;
220-230V, 3ph, 50/60Hz (See Figure 6, P9)
1m cable with CEE-16/4
- Chain acc. EN818-7 (mm): 10.2×30
- Chain net weight (KG/M): ca. 2.32
- Grade of chain: 100 (DAT)
- Chain safety factor: 8:1
- Chain surface: phosphating (black)
- Chain guide: precise chain guide with 4-pocket chain wheel
- Chain falls: 1
- Chain bag: 1 textile chain bag, detachable, ≤35 meters
- Clutch: patented friction clutch for overload protection
- Full load noise level (dB): ≤60
- Brake: 2 DC brakes
- Load hook: 1-fall / turnable
- Suspension: suspension ring
- Mounting position: climbing & stationary
- Handles: standard
- Protection level: IP66
- Net weight without chain, hook & suspension, direct control (KG): 50
- Motor power (KW): ca. 2.2
- Current consumption (A): ca. 5.6
- Mechanism group: FEM 2m/ISO M5
- Color: black, RAL 9005 matt

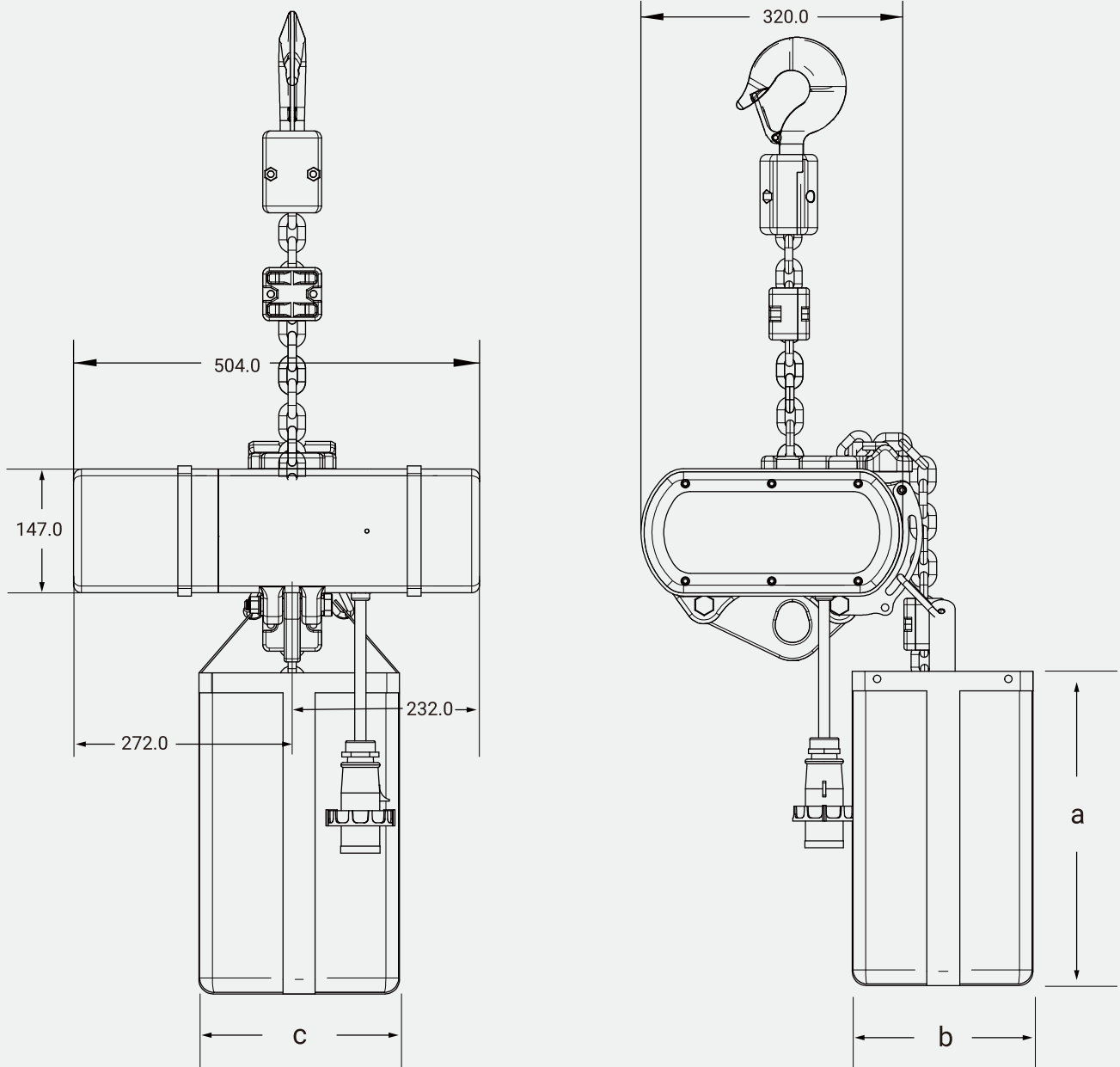
OPTIONAL

- Electronic limit switch, optional, 4-point built-in cam limit
- Electronic limit switch, optional, 2-point external limit
- Encoder, optional, install incremental encoder or reserved encoder installation position (low-speed sprocket output shaft or high-speed motor shaft)
- Weighing detection, optional, load cell
- Chain surface, optional, galvanized (white)

ELECTRIC CHAIN HOIST SIZE

电动葫芦尺寸表

图1/Figure 1



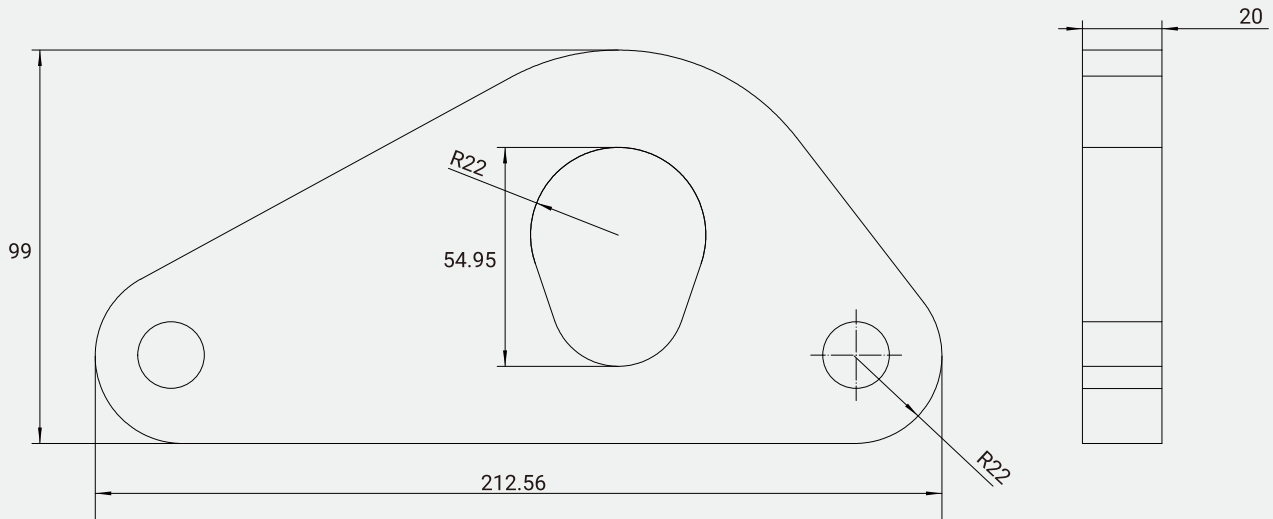
链条袋规格/CHAIN BAG SPECIFICATION			
链条长度 CHAIN LENGTH(m)	链条袋尺寸/CHAIN BAG SIZE(mm)		
	a	b	c
10	150	120	150
15	150	120	150
20	200	120	200
25	200	120	200
30	200	120	200

注：单位mm/Note:Unit mm

OPTIONAL HOOK SUSPENSION ASSEMBLY

吊挂组件

图2/Figure 2

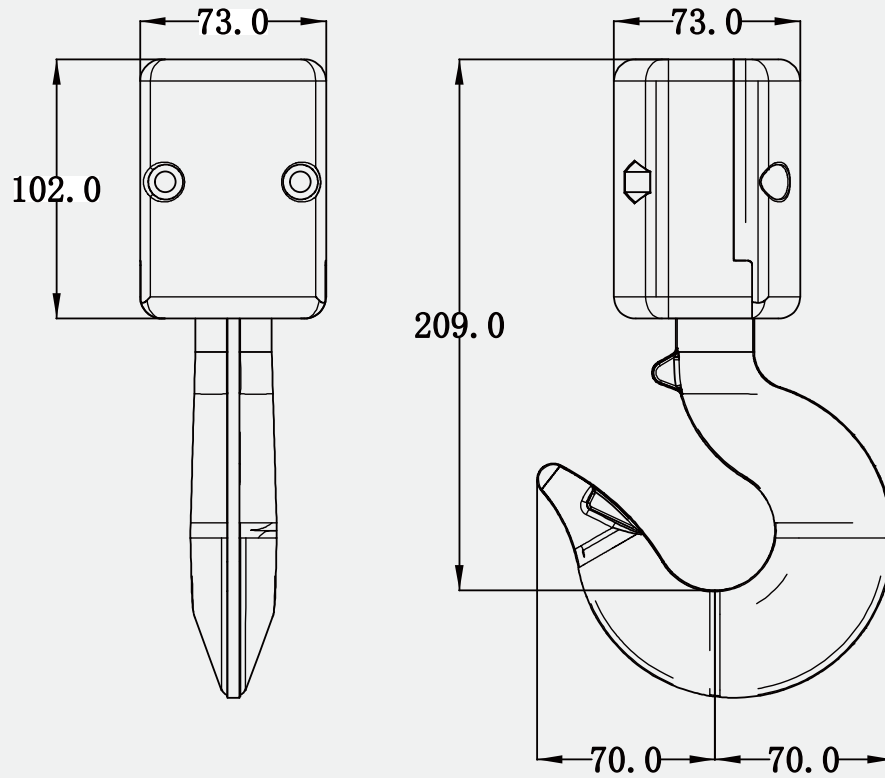


注：单位mm/Note:Unit mm

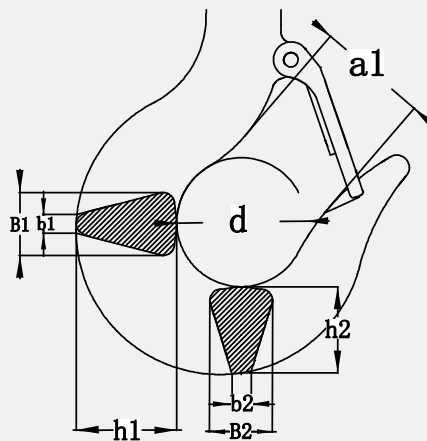
HOOK ASSEMBLY

吊钩组件

图4/Figure 4



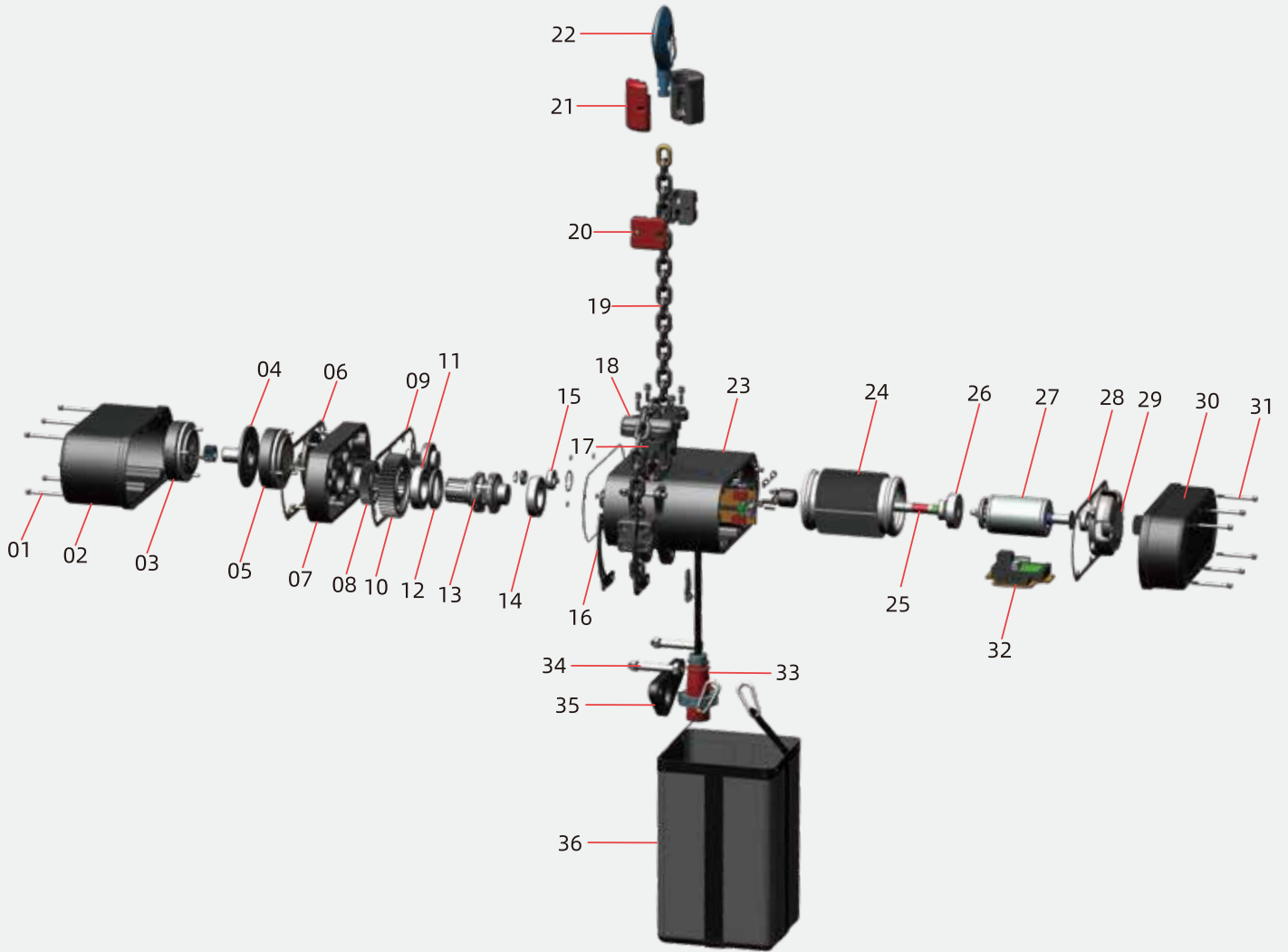
吊钩规格型号 HOOK SPECIFICATION	b1	B1	b2	B2	h1	h2	d	a1
J-D-2T	8.5	33.5	8.5	31	46	44	47.5	41



注：单位mm/Note:Unit mm

PRODUCT STRUCTURE

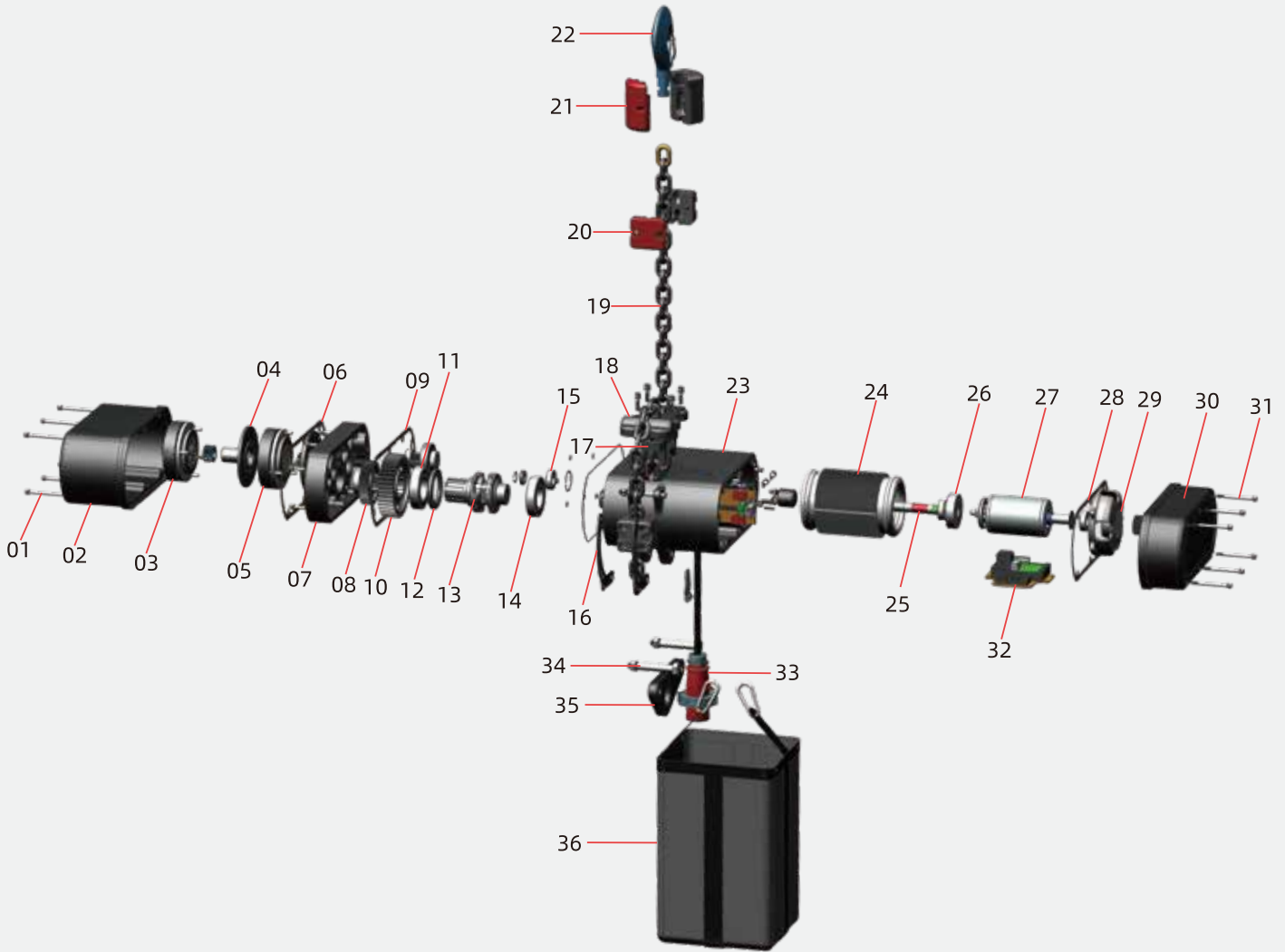
产品结构表



01 电器端盖螺丝	02 双刹电器盖	03 电磁制动器	04 制动器底板	05 电磁制动器	06 密封垫	07 齿轮箱端盖	08 二级传动齿轮
09 密封垫	10 三级传动齿轮	11 轴承	12 油封	13 链轮	14 轴承	15 轴承	16 链袋挂件
17 导链架	18 出链盖板	19 起重链条	20 链条锁块	21 下钩夹板	22 下钩	23 齿轮箱体	24 定子
25 长轴	26 离合转接套	27 转子	28 密封垫	29 离合调节座	30 电器端盖	31 电器端盖螺丝	32 电器
33 航空插头	34 吊环固定螺栓	35 吊环	36 储链袋				

PRODUCT STRUCTURE

产品结构表



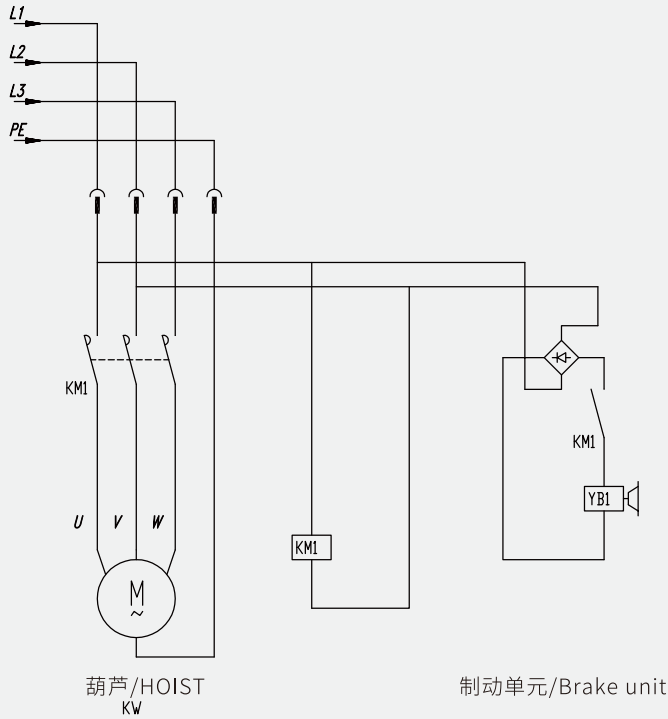
01: electrical end cover screws	02: dual brake electrical cover	03: DC brake	04: brake base plate	05: DC brake	06: sealing gasket	07: gearbox end cover	08: 2nd stage gear
09: sealing gasket	10: 3rd stage gear	11: bearing	12: oil seal	13: sprocket	14: bearing	15: bearing	16: chain bag hanger
17: chain guide	18: chain out cover	19: chain	20: chain locking block	21: load hook plate	22: load hook	23: gearbox	24: stator
25: rotor shaft	26: clutch adapter sleeve	27: rotor	28: sealing gasket	29: clutch adjustment seat	30: electrical end cover	31: electrical end cover screws	32: electrical components
33: aviation plug	34: sling bolt	35: suspension ring	36: chain bag				

ELECTRICAL WIRING DIAGRAM

电器线路图

直接控制-单刹 -3ph/High voltage directly control-single brake-3ph

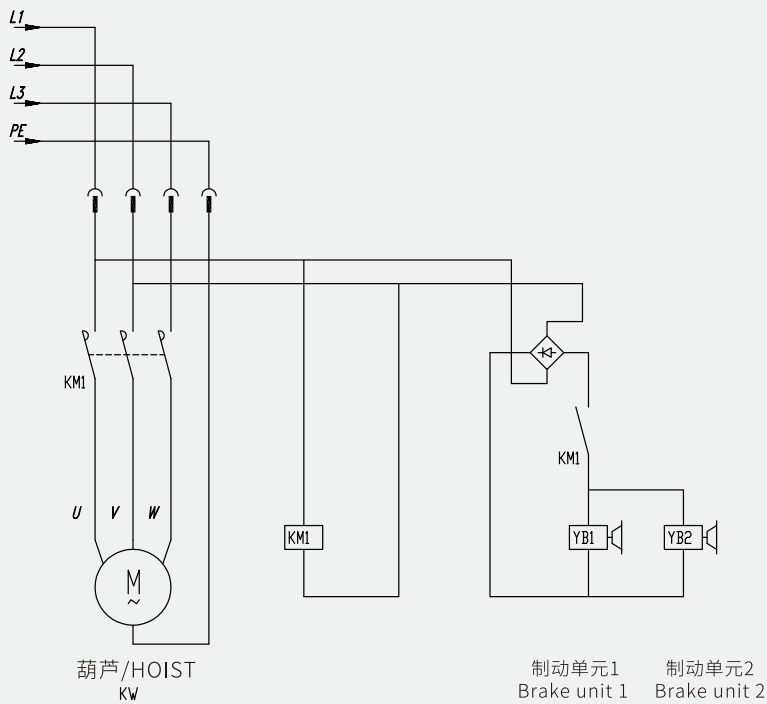
图5/Figure 5



注：不带限位/Note: without limit switch

直接控制-双刹 -3ph/High voltage directly control-double brake-3ph

图6/Figure 6



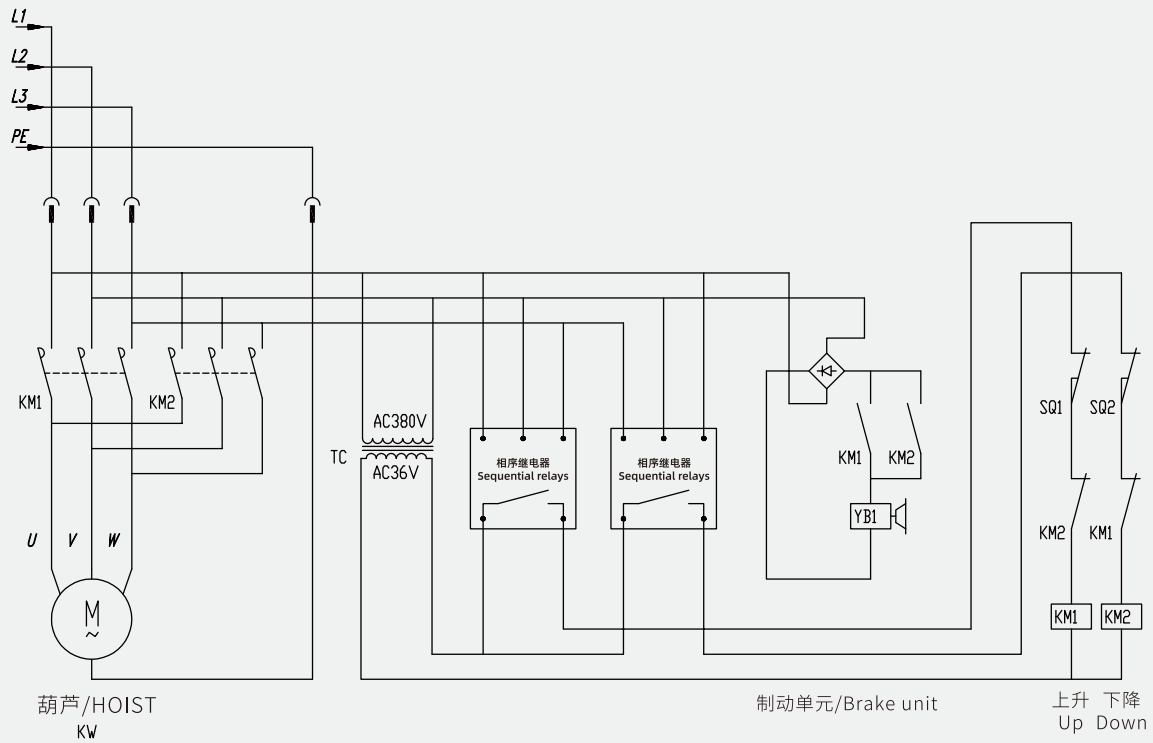
注：不带限位/Note: without limit switch

ELECTRICAL WIRING DIAGRAM

电器线路图

直接控制-单刹 -3ph/High voltage directly control-single brake-3ph

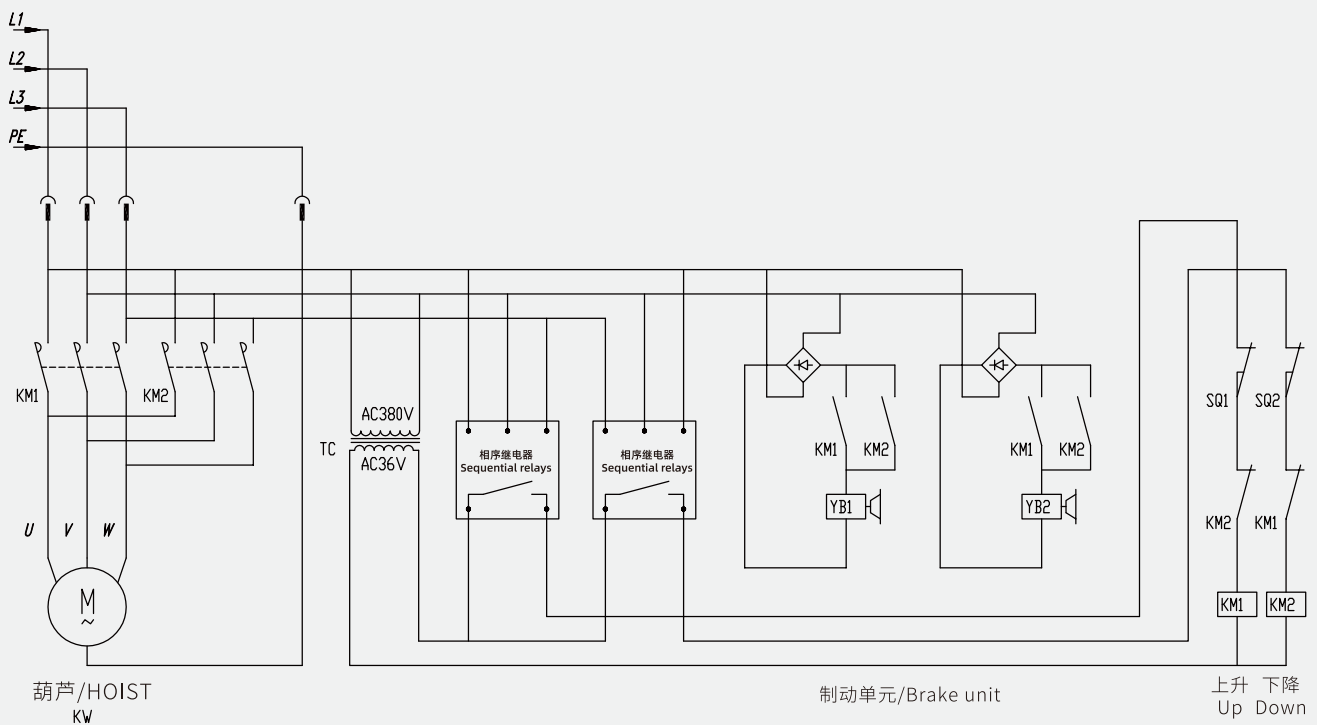
图7/Figure 7



注：带限位/Note: with limit switch

直接控制-双刹 -3ph/High voltage directly control-double brake-3ph

图8/Figure 8



注：带限位/Note: with limit switch

www.jdp.top

Tel: +86 13315233723 (Wechat number)

WhatsApp: +86 17332256769

admin@jdp.top

Manufacturer: JDP China Drive Systems Co., Ltd