

# Kyra

## STAGE ELECTRIC HOIST

Kyra 系列舞台电动葫芦

D8  
Plus

型号/MODEL: Kyra-D8 PLUS 500

起升速度/LIFTING SPEED: 4M/MIN

起升重量/SAFE WORKING LOAD: 500KG

产品符合 D8 PLUS 安全等级要求，依据 IGWW SQP2 标准，并通过 TÜV 测试。

The product meets D8 PLUS requirements in accordance with IGWW SQP2, tested by TÜV.



# CONTENTS

## 目录

产品简介 ..... 2

技术数据 ..... 3

标准配置 ..... 3

选装配置 ..... 3

线形图 ..... 4

产品爆炸图 ..... 7

电器数据 ..... 9

**PRODUCT INTRODUCTION ... 2**

**TECHNICAL DATA ..... 3**

STANDARD VERSION ..... 3

OPTIONAL CONFIGURATION ..... 3

LINE GRAPH ..... 4

PRODUCTS EXPLOSION VIEW ..... 8

**ELECTRICAL DATA ..... 9**



产品图片仅供参考，以实物为准。

Images are for reference only. Please refer to the actual product.

- Rugged shell, small, fashion, easy to carry.
- Matte black surface, avoid light pollution, more convenient for use.
- Strong power, flexible and stable operation.
- Protection grade IP66, can work in the rain.
- G100(DAT) load chain, 8 times safety factor.
- Precision chain guide with 5 pocket sprockets for smoother operation.
- Helical gear transmission, gear grade 6, operating noise  $\leq 60$ dB.
- The lower hook ring design, more safe to use with the shackle.
- Nylon chain guide for smooth chain operation.
- ADC12 aluminum alloy shell, die-cast aluminum gearbox, strong & durable.
- With patented friction clutch for overload protection.
- Electromagnetic brake, higher safety.
- Specially designed chain bag, no disassembly, easily hung upside down.
- The sliding clutch is between the motor and the brake. Power from the brake to the load is transmitted by form-fitting gear parts. Even with serious clutch wear, the load won't fall uncontrollably as the brake can hold it in any position.
- Clutch is made of non-asbestos material.



无需拆卸即可正倒挂。

Easy forward and reverse hanging without disassembly.

- 机身坚固，外观小巧、时尚，搬运方便。
- 表面哑光黑处理，避免光污染，使用更方便。
- 动力强劲，运行灵活稳定。
- 整机防护等级IP66，可在雨中作业。
- 100级（DAT）链条，8倍安全系数。
- 配有5个链窝链轮的精密导链器，运行更顺滑。
- 斜齿齿轮传动，齿轮等级6级，运行噪音 $\leq 60$ 分贝。
- 下钩吊环设计，配合卸扣使用更安全。
- 尼龙导链器，确保链条运行顺畅。
- ADC12高强度铝合金外壳与压铸铝齿轮箱，坚固耐用。
- 搭配获得专利的摩擦离合器，用于过载保护。
- 电磁刹车制动，安全性更高。
- 链条袋经过特设计，无需拆卸，可轻松实现倒挂。
- 滑动离合器位于电动机和制动器之间，能很好地控制住传动部件，即使离合器磨损严重或损坏，负载也不会失去控制坠落，因为负载可以被制动器固定在任何位置。
- 离合器采用非石棉材质。

## 标准配置

- 设备型号: Kyra-D8 PLUS 500
- 起重量符合 DGUV V54 (D8 PLUS): 500KG 双刹车
- 提升速度(m/min): 4
- 供电电压: 380-415V、3ph、50/60Hz;  
220-230V、3ph、50/60Hz (见图6, P9)  
1m电缆, 带CEE-16 / 4
- 链条尺寸 EN818-7(mm): 5.2\*15
- 链条重量 (KG/m): 0.56
- 链条等级: G100 (DAT)
- 链条安全系数: 8:1
- 链条表面: 磷化(黑)
- 导链器: 带有5个链窝链轮的精密导链器
- 链条行数: 1
- 链条袋: 1纺织链条袋, 可拆卸, ≤40米
- 离合器: 获得专利的摩擦离合器  
用于过载保护。
- 满载噪音(dB): ≤60
- 制动器: 2个直流制动
- 吊钩: 1个下(可旋转)
- 悬挂方式: 吊环悬挂
- 安装方式: 自爬或固定
- 手柄: 标配
- 防护等级: IP66
- 不含链条重量及吊环、控制线裸机重量(KG): 18.5
- 电机功率(KW): 0.4
- 电流消耗(A): 2.3
- 机械等级: FEM 2m/ISO M5
- 颜色: 黑色, 色号RAL 9005 哑光

## 选装配置

- **电子限位 选装** 内部调节机械旋转电子限位
- **电子限位 选装** 直接调节上下电子触点限位(见图8,P10)
- **编码器 选装** 安装增量式编码器或预留编码器安装位(低速链轮输出轴或高速电机轴)
- **悬挂方式 选装** 旋转吊钩(见图3,P5)
- **称重检测 选装** 称重传感器
- **链条表面处理 选装** 镀锌(白)

## STANDARD VERSION

- Model: Kyra-D8 PLUS 500
- SWL acc. DGUV V54 (D8 PLUS): 500KG double brake
- Lifting speed (m/min): ca. 4
- Supply voltage: 380-415V, 3ph, 50/60Hz;  
220-230V, 3ph, 50/60Hz (See Figure 6, P9)  
1m cable with CEE-16/4
- Chain acc. EN818-7 (mm): 5.2\*15
- Chain net weight (KG/M): ca. 0.56
- Grade of chain: 100 (DAT)
- Chain safety factor: 8:1
- Chain surface: phosphating (black)
- Chain guide: precise chain guide with 5-pocket chain wheel
- Chain falls: 1
- Chain bag: 1 textile chain bag, detachable, ≤40 meters
- Clutch: patented friction clutch for overload protection
- Full load noise level (dB): ≤60
- Brake: 2 DC brakes
- Load hook: 1-fall / turnable
- Suspension: suspension ring
- Mounting position: climbing & stationary
- Handles: standard
- Protection level: IP66
- Net weight without chain, hook & suspension, direct control (KG): 18.5
- Motor power (KW): ca. 0.4
- Current consumption (A): ca. 2.3
- Mechanism group: FEM 2m/ISO M5
- Color: black, RAL 9005 matt

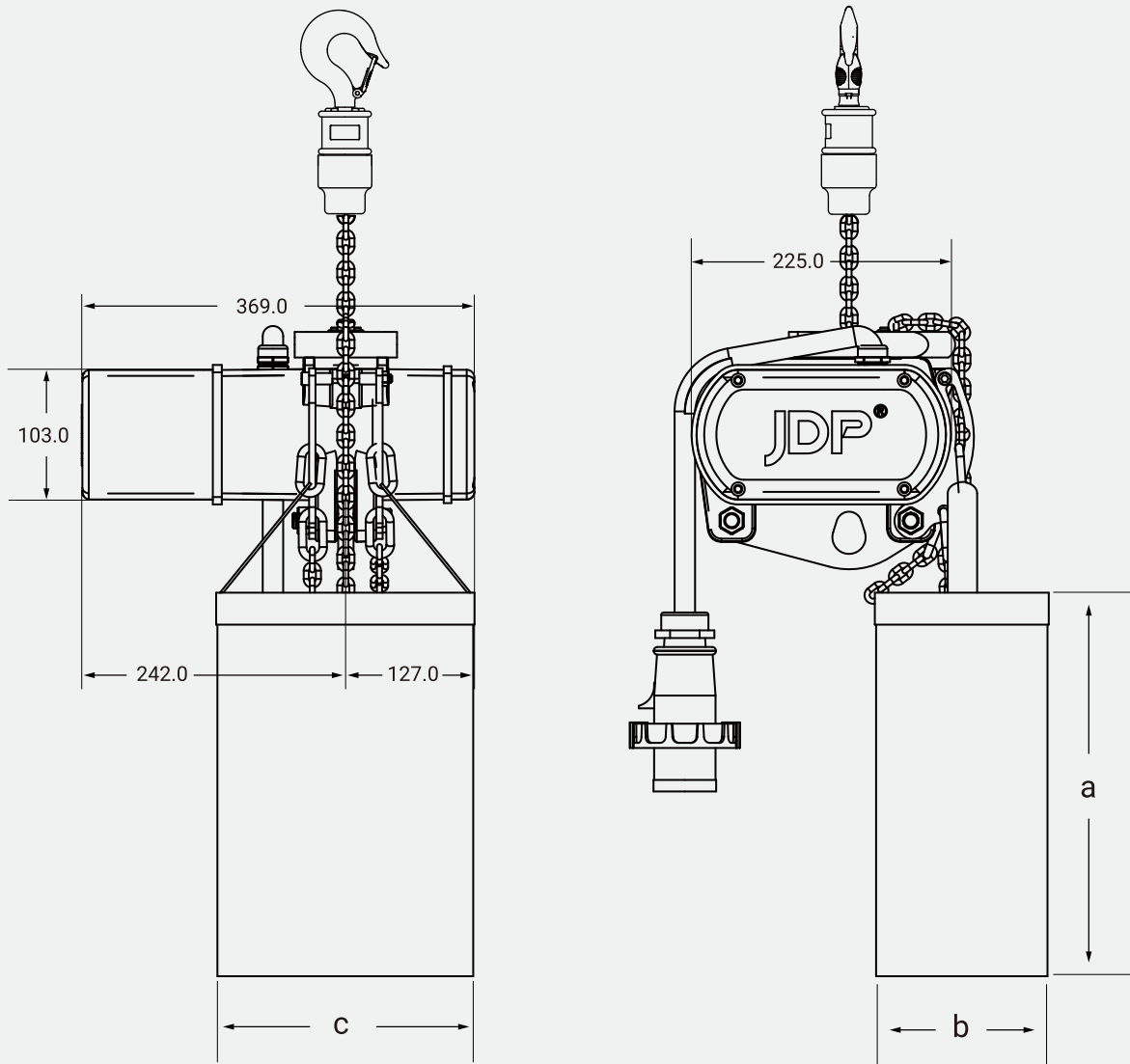
## OPTIONAL

- **Electronic limit switch, optional**, internal adjust mechanical rotation electronic limit.
- **Electronic limit switch, optional**, directly adjust the up and down electronic contact limit switch(See Figure 8, P10).
- **Encoder, optional**, install incremental encoder or reserved encoder installation position (low-speed sprocket output shaft or high-speed motor shaft).
- **Suspension method, optional**, swivel hook(See Figure3, P5).
- **Weighing detection, optional**, load cell.
- **Chain surface, optional**, galvanized (white).

# ELECTRIC CHAIN HOIST SIZE

## 电动葫芦尺寸表

图1/Figure 1



链条袋规格/CHAIN BAG SPECIFICATION			
链条长度 CHAIN LENGTH(m)	链条袋尺寸/CHAIN BAG SIZE(mm)		
	a	b	c
10	150	120	150
15	150	120	150
20	200	120	200
25	200	120	200
30	200	120	200

注：单位mm/Note:Unit mm

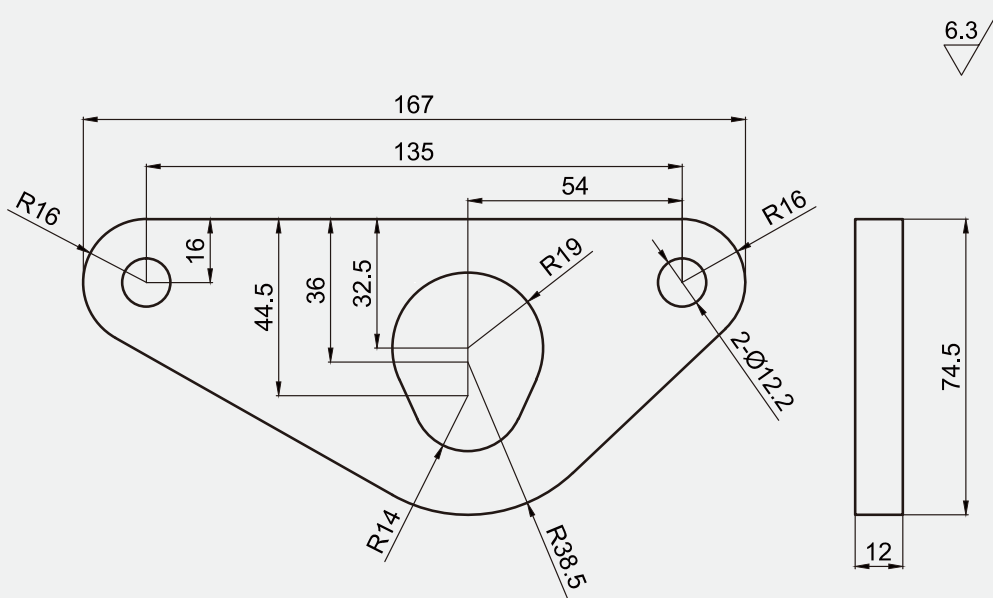
# OPTIONAL HOOK SUSPENSION ASSEMBLY

## 吊挂组件

配置1: 单孔悬挂板组件

Standard 1: Single hole suspension plate assembly

图2/Figure 2

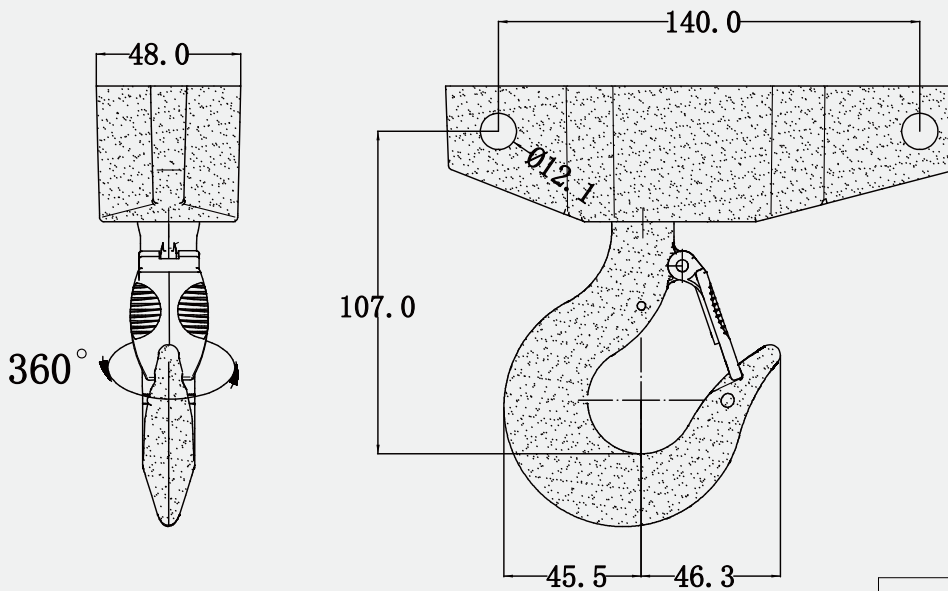


注: 单位mm/Note:Unit mm

配置2: 360°旋转吊钩悬挂组件

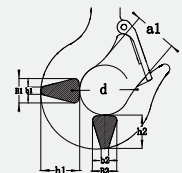
Standard 2: 360° rotating hook suspension assembly

图3/Figure 3



注: 单位mm/Note:Unit mm

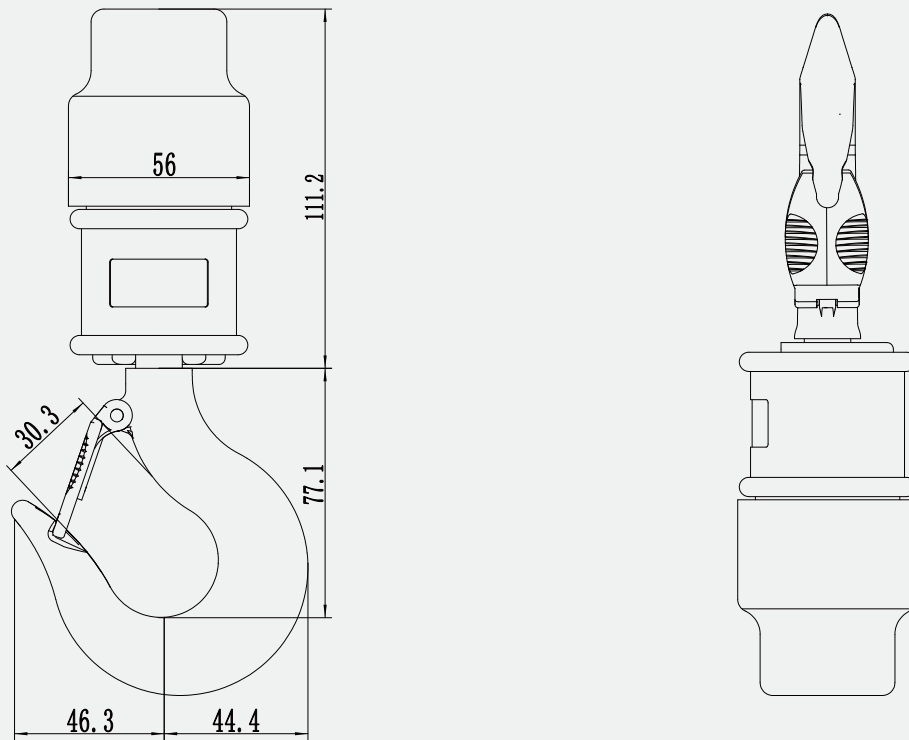
吊钩规格型号 HOOK SPECIFICATION	b1	B1	b2	B2	h1	h2	d	a1
J-D-0.5T	5.1	17.3	5.1	17.3	27.7	23.7	35.5	30.5



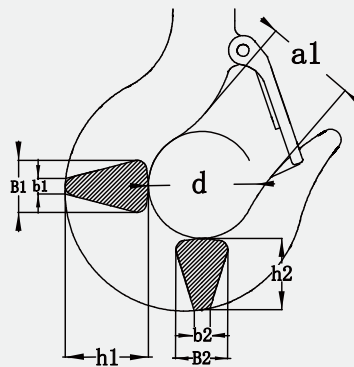
# HOOK ASSEMBLY

## 吊钩组件

图4/Figure 4



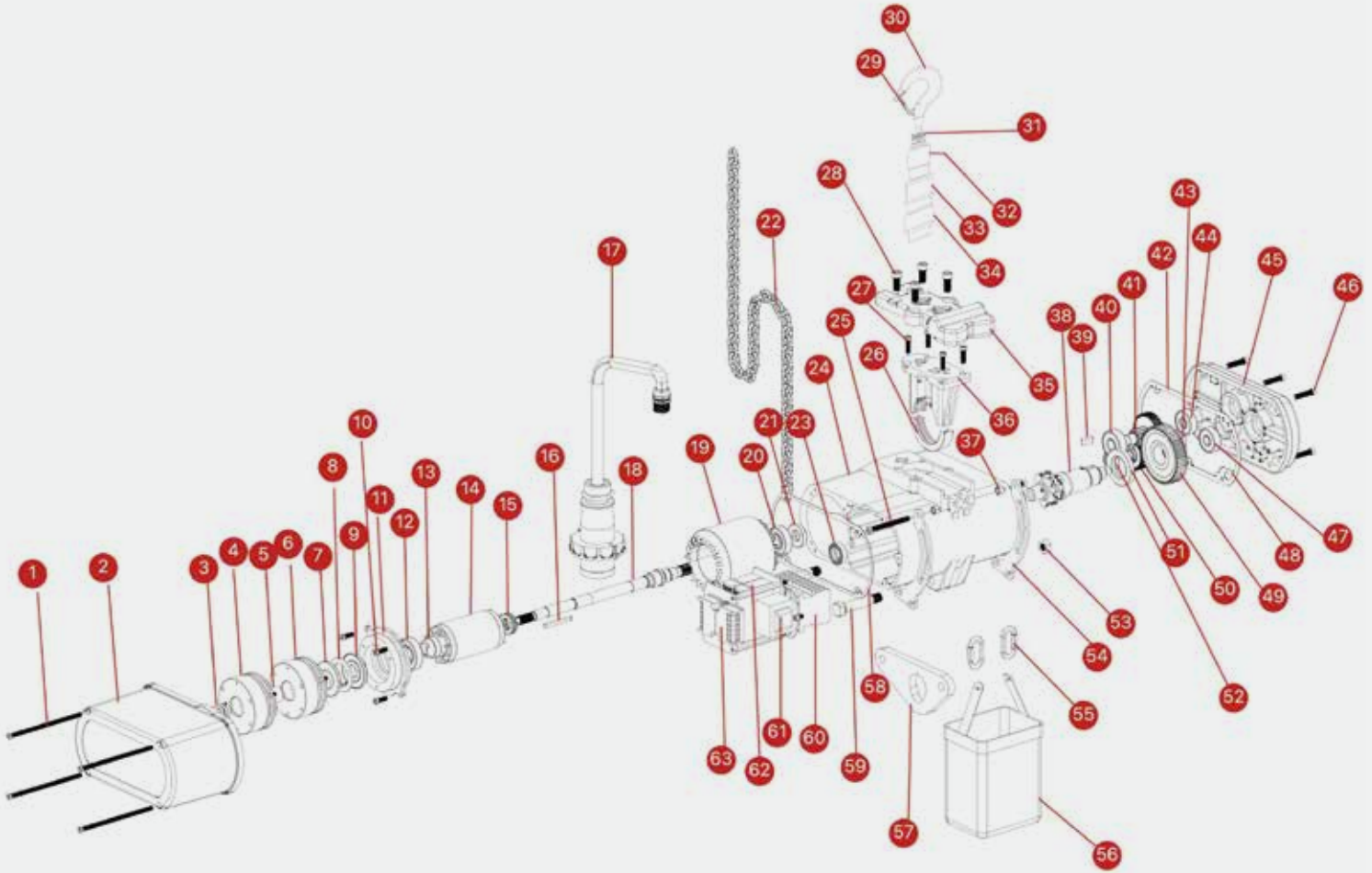
吊钩规格型号 HOOK SPECIFICATION	b1	B1	b2	B2	h1	h2	d	a1
J-D-0.5T	5.1	17.3	5.1	17.3	27.7	23.7	35.5	30.5



注：单位mm/Note:Unit mm

# PRODUCT STRUCTURE

## 产品结构表



- 01: 电器端盖螺丝
- 02: 电器刹车盖
- 03: 调节弹簧
- 04: 电磁制动器-1
- 05: 制动器调节套
- 06: 电磁制动器-2
- 07: 离合器上压片
- 08: 离合器摩擦片
- 09: 离合器下压片
- 10: 制动器底座螺丝
- 11: 制动器底座
- 12: 转子轴承
- 13: 转子内镶套
- 14: 转子
- 15: 压力轴承
- 16: 制动器A型键

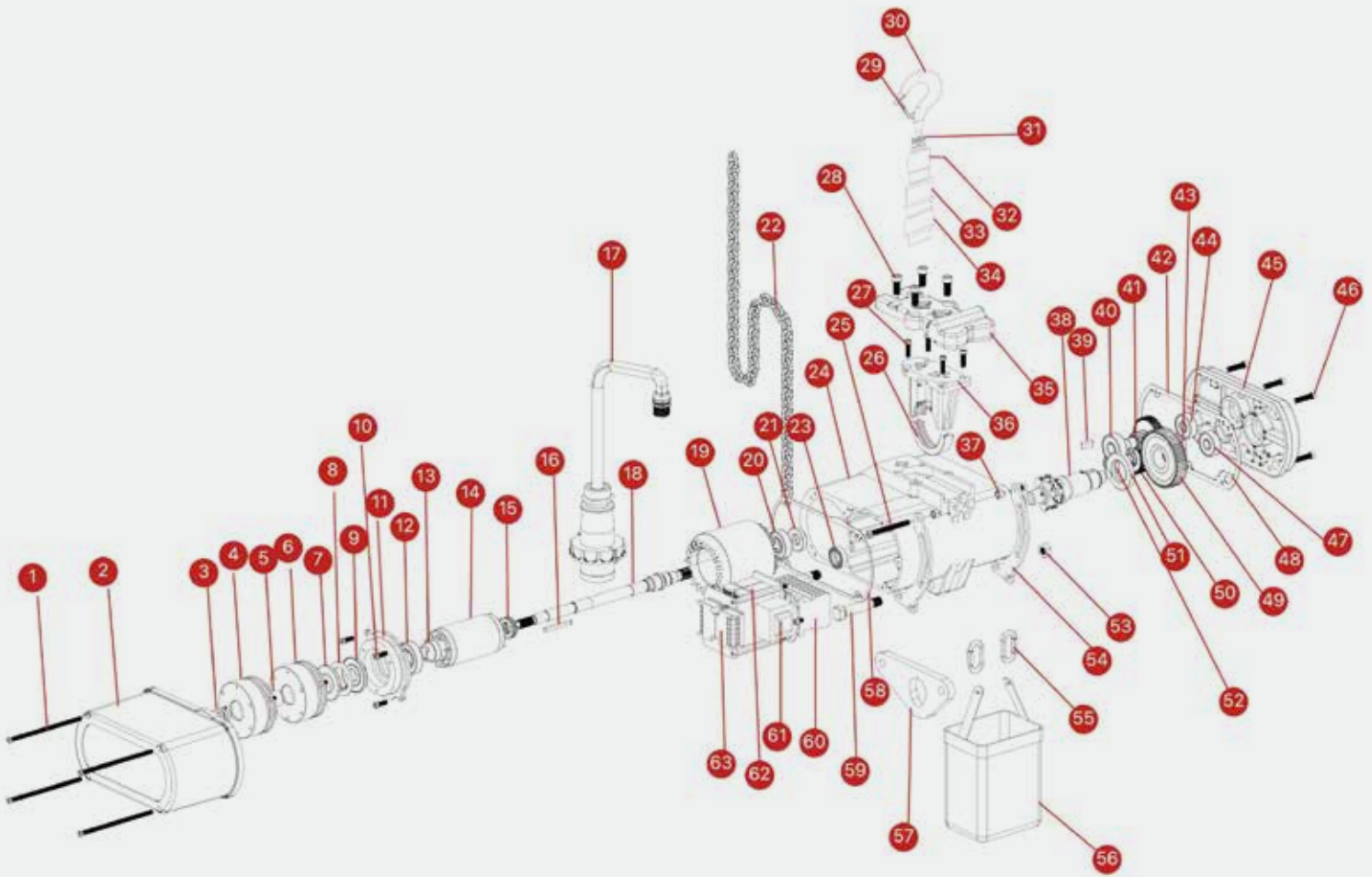
- 17: 控制线总成
- 18: 转子轴
- 19: 定子
- 20: 轴承
- 21: 骨架油封
- 22: 短环链条
- 23: 轴承
- 24: 箱体
- 25: 链兜挂件螺丝
- 26: 护链器
- 27: 导链架螺丝
- 28: 出链盖板螺丝
- 29: 保险卡
- 30: 下吊钩
- 31: 单向推力球轴承
- 32: 下钩夹板H5

- 33: 下钩胶套B
- 34: 下钩胶套A
- 35: 出链盖板
- 36: 导链架
- 37: 链兜挂件固定垫块
- 38: 起重链轮
- 39: 链轮A型键
- 40: 轴承
- 41: 二级传动齿轮
- 42: 密封垫
- 43: 卡簧
- 44: 轴承
- 45: 齿轮箱端盖
- 46: 齿轮箱端盖螺丝
- 47: 轴承
- 48: 密封胶

- 49: 输出齿轮
- 50: 三级传动齿轮
- 51: 骨架油封
- 52: 轴承
- 53: 上吊钩轴固定螺丝
- 54: 链兜悬挂架
- 55: 链兜卸扣
- 56: 链兜
- 57: 上钩吊环
- 58: 电器密封垫
- 59: 上钩轴
- 60: 接触器
- 61: 变压器
- 62: 相序
- 63: 整流器

# PRODUCT STRUCTURE

## 产品结构表



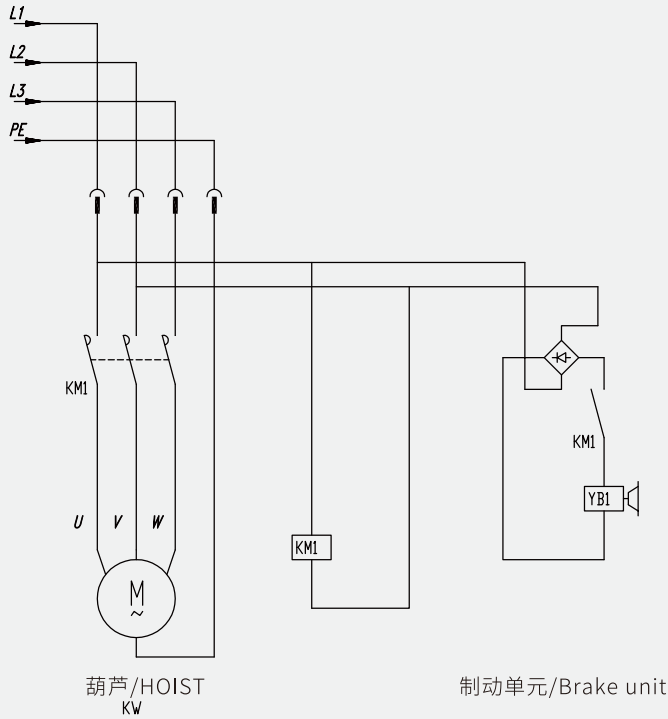
- |                                |                              |                                      |                                   |
|--------------------------------|------------------------------|--------------------------------------|-----------------------------------|
| 01: electrical end cover screw | 17: control cable assembly   | 33: hook rubber buffer B             | 49: output gear                   |
| 02: electrical brake cover     | 18: rotor shaft              | 34: hook rubber buffer A             | 50: 3rd stage gear                |
| 03: adjusting spring           | 19: stator                   | 35: chain out cover                  | 51: skeleton oil seal             |
| 04: DC brake-1                 | 20: bearing                  | 36: chain guide                      | 52: bearing                       |
| 05: brake adjustment sleeve    | 21: skeleton oil seal        | 37: chain bag mounting spacer        | 53: upper hook shaft fixing screw |
| 06: DC brake-2                 | 22: short link chain         | 38: sprocket                         | 54: chain bag hanger              |
| 07: upper pressure plate       | 23: bearing                  | 39: type A parallel key for sprocket | 55: chain bag shackle             |
| 08: friction disc              | 24: gearbox                  | 40: bearing                          | 56: chain bag                     |
| 09: lower pressure plate       | 25: chain bag mounting screw | 41: 2nd stage gear                   | 57: suspension ring               |
| 10: brake base screw           | 26: chain guard              | 42: sealing gasket                   | 58: sealing gasket                |
| 11: brake base                 | 27: chain guide fixing screw | 43: circlip                          | 59: upper hook shaft              |
| 12: rotor bearing              | 28: chain out cover screw    | 44: bearing                          | 60: contactor                     |
| 13: rotor insert sleeve        | 29: safety latch             | 45: gearbox end cover                | 61: transformer                   |
| 14: rotor                      | 30: load hook                | 46: gearbox end cover screw          | 62: phase sequence                |
| 15: thrust bearing             | 31: one-way thrust bearing   | 47: bearing                          | 63: rectifier                     |
| 16: type a parallel key        | 32: load hook side plate H5  | 48: sealant                          |                                   |

# ELECTRICAL WIRING DIAGRAM

## 电器线路图

直接控制-单刹 -3ph/High voltage directly control-single brake-3ph

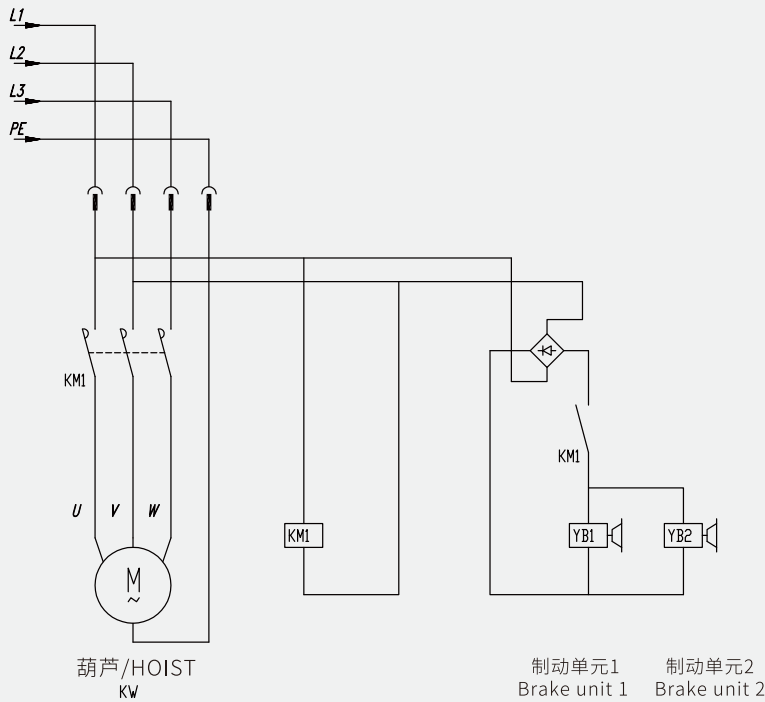
图5/Figure 5



注：不带限位/Note: without limit switch

直接控制-双刹 -3ph/High voltage directly control-double brake-3ph

图6/Figure 6



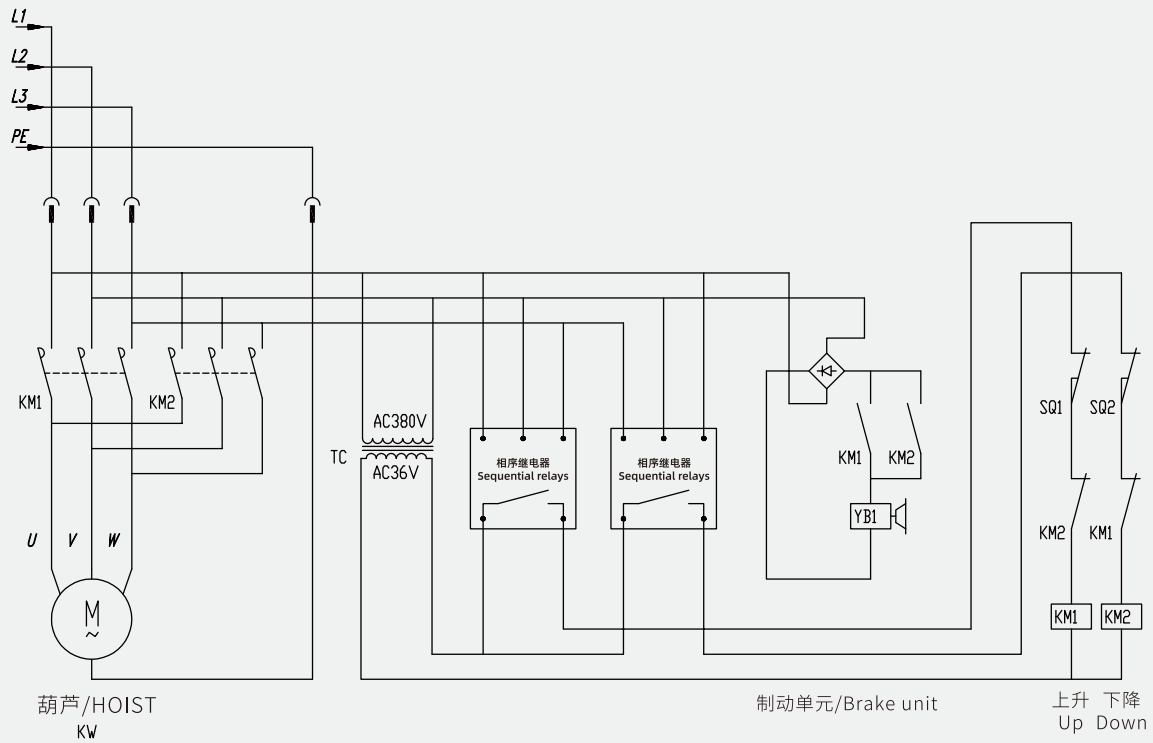
注：不带限位/Note: without limit switch

# ELECTRICAL WIRING DIAGRAM

## 电器线路图

直接控制-单刹 -3ph/High voltage directly control-single brake-3ph

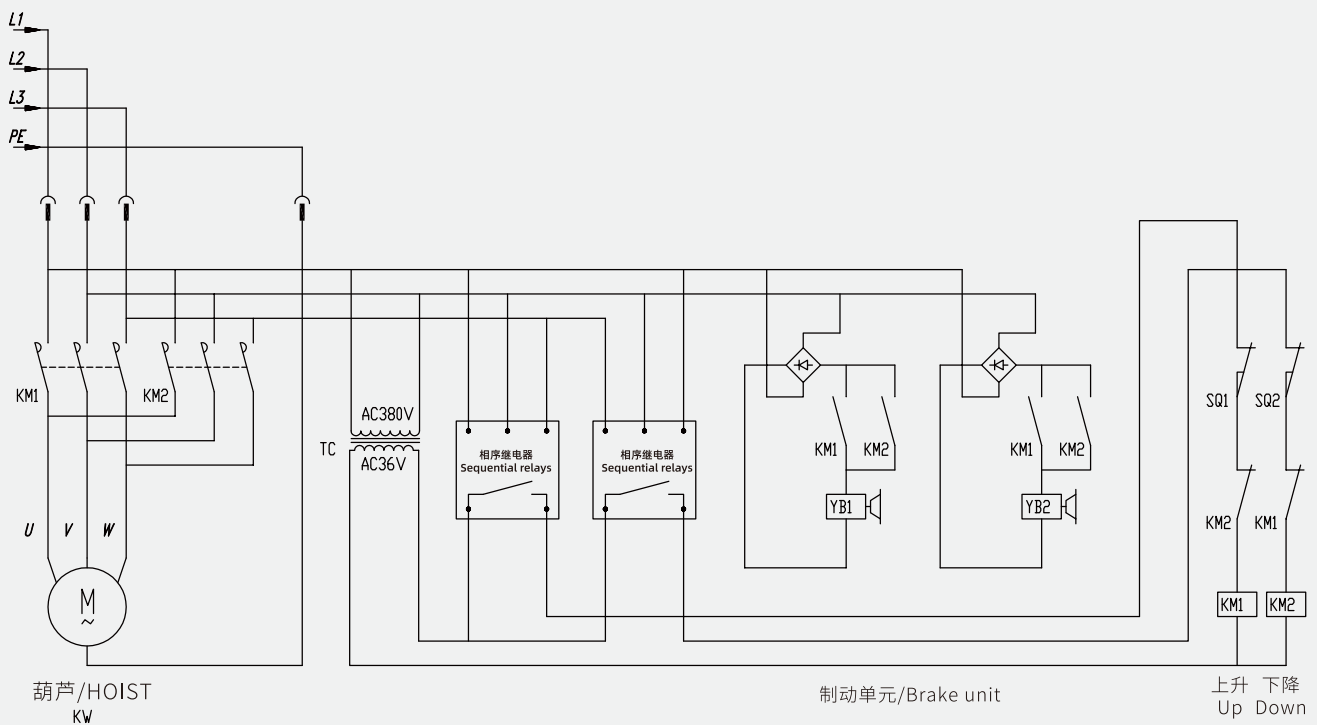
图7/Figure 7



注：带限位/Note: with limit switch

直接控制-双刹 -3ph/High voltage directly control-double brake-3ph

图8/Figure 8



注：带限位/Note: with limit switch

[www.jdp.top](http://www.jdp.top)

Tel: +86 13315233723 (Wechat number)

WhatsApp: +86 17332256769

[admin@jdp.top](mailto:admin@jdp.top)

Manufacturer: JDP China Drive Systems Co., Ltd